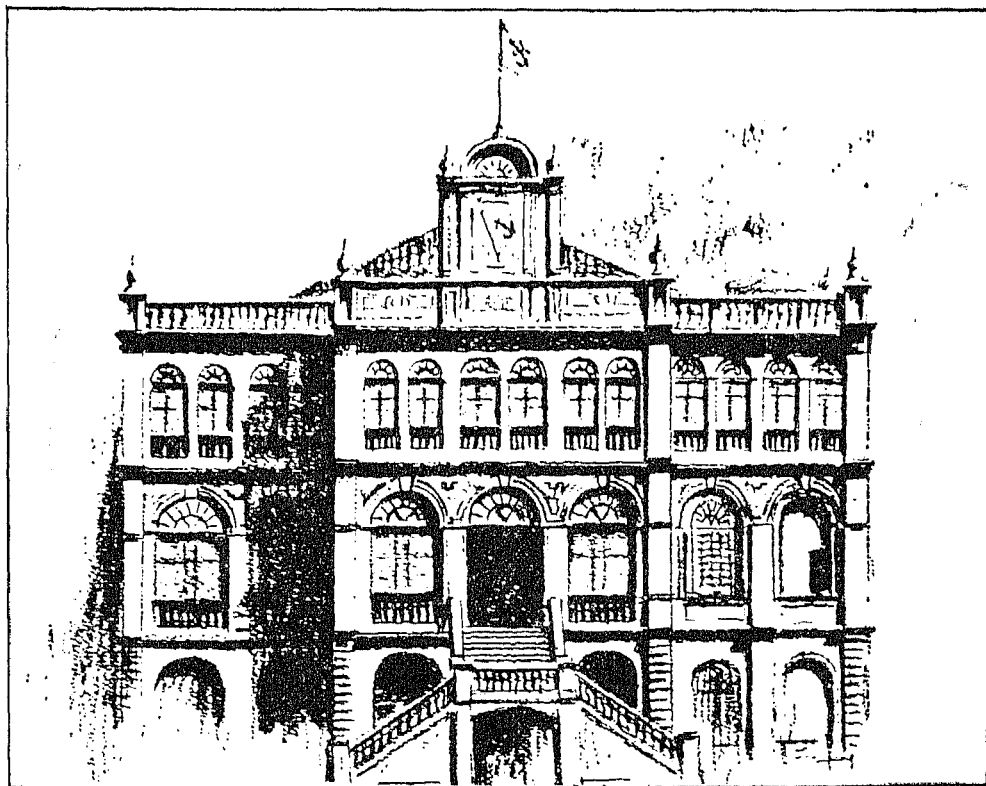


SHIPPING · TRADE · INDUSTRY
PLANTATIONS · WAREHOUSING · INSURANCE

EAC



THE EAST ASIATIC COMPANY LIMITED

THAILAND

THE RAMAKIEN: A Prose Translation of the Thai Ramayana by Ray A. Olsson, M.D. 450 pages 1968. 95 Baht illustrated.

The popular epic poem of India—The Ramayana—had been translated into many Western languages but, the versified, Thai version of this story—The Ramakien—written by His Majesty King Pra Buddha Yod Fa Chulalok, Rama I, while he was making Bangkok his capital, has only been translated once into a foreign tongue and that was into German. This German version, translated by Dr. Christian Velder, was called "Der kampf der Götter und Dämonen". During Dr. Olsson's stay in Thailand, he was impressed with the variety of ways this story influences the Thai people. One may see families slowly walking through the galleries of Wat Pra Kaew on Sunday afternoon, looking at the murals depicting the story, while a parent tells the story to his children. City streets, and even personal names are drawn from the Ramakien. The title, Rama, adapted by earlier kings of the present dynasty and the royal symbol, the Garuda, likewise are taken from this story.

Faced at every turn by these reminders, Dr. Olsson naturally wished to know more of its details. As he read Dr. Velder's work he decided to translate it to English for his own amusement. The enthusiasm of his friends led to the decision to attempt publication. His purpose is to bring to others some of the pleasure he had in learning a little more about the country which has been his home for the past two years.

THAILAND'S TRANSITION: A study of the new approach of developing countries by Trirat Promsiri 2nd ed. 1969. 79 pages. 20 Baht.

The call for a new developmental ideology has been made in this study by using Thailand as a case in point. The researcher points out many key reasons why non-economic factors have to go hand in hand with economic factors in modernizing the grass-root traditional society, for without it, the transformation into a modern man, family and state is notoriously difficult and painfully slow. Over-emphasis on an unbalanced nation-growth in the past, especially in the sphere of economic development, has proved to be a temporary release of life and does not assure modernity.

Praepittaya Ltd., Part.

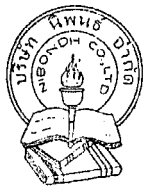
716-718 Burapa Palace, Bangkok 2

Tel. 21986, 24283

Cable address: "Praepitaya"

With the compliments of

THE THAI DANU BANK LIMITED



**PUBLISHERS, BOOKSELLERS,
SUBSCRIPTION AGENTS,
STATIONERS.**

NIBONDH & CO., LTD.

38-40 NEW ROAD, SIYAK PHYA SRI, P.O. BOX 402, BANGKOK
TELEPHONE : 22611. CABLE ADDRESS : "NIBONDH, BANGKOK"

We take great honour in announcing our distributorship of the following British
NEWSPAPERS and PERIODICALS:

LONDON TIMES * DAILY TELEGRAPH * NEW STATESMAN *
MOTOR * SUNDAY TIMES * SUNDAY TELEGRAPH * SUNDAY
EXPRESS * FINANCIAL TIMES * ECONOMIST * FAR EASTERN
ECONOMIC REVIEW * SPECTATOR * MANCHESTER GUARDIAN *
WOMAN * WOMAN'S OWN * plus many others. We also supply superior
quality children's educational comics, such as: LOOK & LEARN, TELL ME
WHY, JUNE & SCHOOLFRIEND etc.

At the present time we have a large selection of books on THAILAND,
SOUTHEAST ASIA (History and Culture), ANTHROPOLOGY, SCIENCE,
BUSINESS ADMINISTRATION, ECONOMICS, THAI LANGUAGE etc.

NIBONDH & CO., LTD. are the suppliers of THAI PUBLICATIONS to all
major Universities and Libraries of the world. All inquiries should be sent
to the address below:

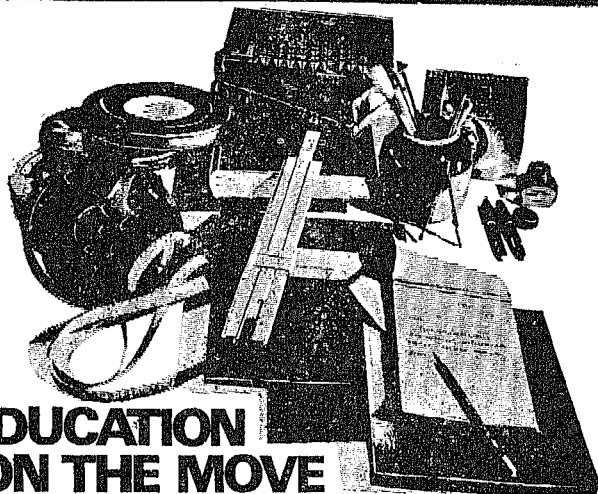
NIBONDH & CO., LTD.

P.O. BOX 402

Bangkok, THAILAND

Tel: 22611

Correspondence in ENGLISH, THAI, FRENCH & GERMAN



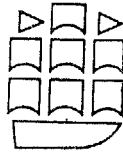
EDUCATION IS ON THE MOVE IN THAILAND

And the movement is producing positive results in equipping younger generations with the knowledge and skills they need to meet the future with confidence. Thai students are keen to learn, and willing to work. The Shell Co. of Thailand helps students realise their goal, by providing Shell University Scholarships. The Shell Company also donates text books, scientific apparatus, and offers educational aids to schools, colleges, and Universities throughout the country. The Shell Company believes, this contribution will help keep education on the move.



FORWARD LOOKING PEOPLE GO SHELL

**LEARN WITH LONGMAN
THE LONGMAN GROUP LIMITED
(PUBLISHERS)**



WORLD LEADERS IN TEXTS ON LEARNING ENGLISH
AS A FOREIGN LANGUAGE AND
IN EDUCATIONAL TEXTS OF ALL KINDS

HEAD OFFICE: 14 GROSVENOR STREET, LONDON, W. 1, ENGLAND
REPRESENTATIVES & BRANCHES THROUGHOUT THE WORLD

BANGKOK SHOWROOM: 352/3 RAMA 1 ROAD
FIRST FLOOR BEHIND THE SIAM CINEMA
SIAM SQUARE
BANGKOK

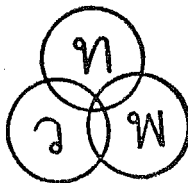
TELEPHONE: MON-FRI 8:30 - 5:30: 51042
AFTER OFFICE HOURS: 910846

PLEASE WRITE TO US FOR A CATALOGUE STATING YOUR INTERESTS

**THAI WATANA PANICH PRESS
IS PROUD TO BE THE SOLE AGENT
(IN SIAM) OF**

Dr. David Wyatt: The Politics of Reform in Thailand

Anyone who wishes to know anything about Siamese
Education during the reign of King Chulalongkorn,
must indeed consult this extremely well written
book by so renowned a historian.



Thai Watana Panich
599 Maitrichit Road, Bangkok 1
(Tel. 20114, 20807, 28241)

Publishers of school text books over three decades

With the compliments of

JARDINE WAUGH LTD.

CHALERMNIT BOOKSHOPS

1-2 Erawan Arcade

Tel. 58759

and

30 Rajprasong Trade Centre

Tel. 55630

Largest collection of books on Siam and South-East Asia

including rare books; also gramophone records

Books in English, French, German, Danish, Italian and Spanish

THE SOCIAL SCIENCE ASSOCIATION PRESS OF THAILAND

Books on Buddhism, History and Siamese Culture

Opening of the Wisdom Eye

by The Dalai Lama

The Wisdom Gone Beyond

Preface by H.H. Prince Dhaninivat

Teaching Dhamma by Pictures

by Bhikkhu Buddhadasa

Patimokkha

Translated by Nanamoli Thera

Essays on Thai Folklore

by Phya Anuman Rajadhon

From Ancient Thai to Modern Dialects

by J.M. Brown

Notes on the Customs of Cambodia

by Chou Ta-Kuan

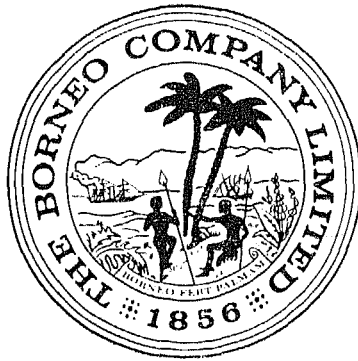
Aspects of Siamese Kingship in the Seventeenth Century

by Jeremy Kemp

All these books are published by **The Social Science Review and The Social Science Association Press of Thailand**, Chula Soi 2, Phya Thai Road, Bangkok 5, Tel. 57622.

(They are distributed by **Sukit Siam Co., Ltd.**, 1715 Rama 4 Road, Samyan Circle, Bangkok 5 Tel. 51630)

Serving Thailand and the World



For more than a century, the scope of The Borneo Company's activities have assisted in bringing higher standards of living to the people of Thailand. Today, the company's operations play an important part in practically all fields of Thailand's commercial and economic development, thereby continuing their traditional close links with the country's progress.

In this second century of progress, The Borneo Company aggressively pursues new developments and employs modern techniques backed by intimate market knowledge to supply even better services and products for the growing needs of the Thai consumer.

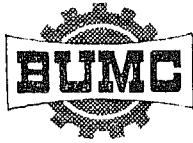
MAIN ACTIVITIES IN THAILAND

- | | |
|--|---|
| <input type="checkbox"/> Marketing | <input type="checkbox"/> Pest Control |
| <input type="checkbox"/> Import & Distribution | <input type="checkbox"/> Photo Processing |
| <input type="checkbox"/> Manufacturing | <input type="checkbox"/> Travel and Tourism |
| <input type="checkbox"/> Shipping | <input type="checkbox"/> Transport & Car Hire |
| <input type="checkbox"/> Insurance | <input type="checkbox"/> Airline-Airport Handling |

The **BORNEO** Company (Thailand) Limited

1041 Silom Road • Bangkok • Thailand

WITH COMPLIMENTS OF



บริษัท กรุงเทพสหกล จำกัด
BANGKOK UNITED MECHANICAL CO. LTD.
144 SUKHUMVIT ROAD, BANGKOK PHONES: 54061-8

sole distributor for

MITSUBISHI CONSTRUCTION EQUIPMENT
MITSUBISHI FUSO TRUCKS & DUMP TRUCKS
HYSTER FORKLIFT & EARTH COMPACTOR
THE KID-FARMING TRACTOR

with services for

LAND & MARINE TRANSPORTS
SAHAKOL AIR TAXI
ROAD & BUILDING CONSTRUCTION

OXFORD IN ASIA HISTORICAL REPRINTS

This is the fourth year since the first book in this series appeared. To date twenty titles have already been published. Several others are in the course of production and many more are under consideration.

A prospectus will be sent free on request.

"The Oxford University Press deserves great credit for bringing back into circulation such books ... and for doing it with such flair." *The Spectator*

3 New Titles

JOURNAL OF AN EMBASSY FROM THE GOVERNOR-GENERAL OF INDIA TO THE COURTS OF SIAM AND COCHIN CHINA

By John Crawford

Introduction by D.K. Wyatt

The main portion of the *Journal* is devoted to an account of the Embassy and its adventures in Siam and Cochin China. Crawford too gives an interesting and lengthy description of Penang in 1821 and also of Malacca and Singapore.

"The result, magnificently produced in Japan will be much appreciated by those who can afford the price." *Times Literary Supplement*

608 pp., frontispiece, 25 illustrations, 1 map M\$60.00

THE KINGDOM AND PEOPLE OF SIAM

By Sir John Bowring

Introduction by D.K. Wyatt

For a man who spent scarcely a month in Bangkok, this book is an unexpectedly lengthy and comprehensive work but

Bowring was an experienced and perceptive traveller. He also used intelligently the accounts of others. His careful blending of these borrowings with the results of his own observation produced a book which undoubtedly is the best account of Thailand at the middle of the nineteenth century, when it stood on the threshold of revolutionary change.

2 volumes, 860 pp., colour plates Approx. M\$50.00

A NEW HISTORICAL RELATION OF THE KINGDOM OF SIAM

By Simon de la Loubere

Introduction by D.K. Wyatt

This book, first translated into English in 1693, is universally regarded as the finest work on seventeenth century Thailand. It consists of a lucid, comprehensive, and accurate account of aspects of life and civilization of Ayudhya in the seventeenth century. Much of what the author saw then is still to be seen today in Thai villages, monasteries and homes.

450 pp., plates

Approx. M\$30.00



Oxford University Press
P.O. Box 282,
Kuala Lumpur.



**The Chartered Bank
are proud of
their long and
friendly association with
Thailand since 1892**



THE CHARTERED BANK

(Incorporated in England by Royal Charter in 1853)
Established in Thailand since 1892

Offices in Thailand

40 Chartered Bank Lane, Bangkok.

Branches:

Rajprasong Shopping Centre, (Second Avenue), Bangkok.
Pang-nga Road, Phuket.



KHOMAPASTR
ORIGINAL OR TRADITIONAL?
WE HAVE LOVELY PRINTS
TO SUIT YOUR FASHIONS
AT OUR SHOP IN
PLOENCHIT
SHOPPING
CENTRE
MANY OTHER
PRETTY THINGS TOO

FOR YOUR AFTER-MEETING SUPPER

THE TWO VIKINGS RESTUARANT

AWAITS YOU JUST AROUND THE CORNER

7 Soi Sawasdi 31 Sukhumvit Road

telephone 911978



OVALTINE

FOR
HEALTH
AND
STRENGTH
AND
ENERGY

ADVERTISING RATES

Full page : 1,000 baht per issue

Half page: 600 baht per issue

Page size : $9\frac{1}{2}'' \times 7''$

Text to be submitted by 1st October for January issue,

1st April for July issue.

EDITORIAL AND PUBLICATIONS COMMITTEE

Chairman : Michael Smithies, Honorary Editor of
the *Journal*

Honorary Advertising

Manager : Aswin Kongsiri

Members : Sulak Srivaraks

Tej Bunnang

P.J.S. Young

PUBLICATIONS OF THE SIAM SOCIETY

	Price (Baht)
1. The Journal - per number	40.00
The Journal - back numbers before 1946	60.00
2. Index to the Journal, Volumes I to XXV (sold out)	12.00
3. Index to the Journal, Volumes XXVI to XL (sold out)	12.00
4. Florae Siamensis Enumeratio—per number	30.00
5. The Natural History Bulletin - per number	30.00

REPRINT VOLUMES I-X

- | | | |
|-----|---|--------|
| 6. | The Commemorative Publication issued on the occasion of the Society's 50th Anniversary: | |
| | One set (Vols. I & II) cloth-bound | 120.00 |
| | One set (Vols. I & II) paper-bound | 100.00 |
| | Vol. III paper-bound, Early History and Ayudhya (sold out) | 50.00 |
| | Vol. IV „ „, Lophburi, Bangkok, Bhuket... | 50.00 |
| | Vol. V „ „, Relationship with Burma, Part I | 50.00 |
| | Vol. VI „ „, Relationship with Burma, Part 2 | 50.00 |
| | Vol. VII „ „, Relationship with Portugal, Holland and the Vatican | 50.00 |
| | Vol. VIII „ „, Relationship with France, England and Denmark | 50.00 |
| | Vol. IX „ „, Dr. R.S. le May: The Coinage of Siam (sold out) | 50.00 |
| | Vol. X „ „, Studies of old Siamese Coins | 50.00 |
| 7. | Erik Seidenfaden: The Thai Peoples | 50.00 |
| 8. | Charles Nelson Spinks: The Ceramic Wares of Siam, 1965 | 80.00 |
| 9. | Gunnar Seidenfaden and Tem Smitinand: | |
| | The Orchids of Thailand: A Preliminary List, 1959, Part I | 45.00 |
| | 1959, Part II, 1 | 45.00 |
| | 1960, Part II, 2 | 75.00 |
| | 1961, Part III | 75.00 |
| | 1963, Part IV, 1 | 75.00 |
| | 1965, Part IV, 2 | 100.00 |
| 10. | Monograph No. 1 Gordon Young: The Hill Tribes of Northern Thailand
4th edition, 1969 | 70.00 |
| 11. | Monograph No. 2 H.R.H. Prince Damrong Rajanubhab:
A History of Buddhist Monuments in Siam, ill., 1962 (sold out) | 20.00 |
| 12. | Monograph No. 3 Albert H. Banner and Dora M. Banner:
The Alpheid Shrimp of Thailand, ill., 1966 | 80.00 |
| 13. | John Black, F.R.G.S.: The Lofty Sanctuary of Khao Phra Vihar | 20.00 |
| 14. | Felicitation Volumes of Southeast-Asian Studies, Vol. I | 80.00 |
| | Vol. II | 80.00 |
| 15. | The Kamthieng House; An Introduction
Guide to the Kamthieng Museum, ill., 1966 | 50.00 |
| 16. | An Annotated Bibliography of Material Concerning Southeast Asia from
Petersmanns Geographische Mitteilungen 1855-1966. Larry Sternstein and
Carl Springer | 100.00 |
| 17. | H.H. Prince Dhani Nivat: Collected articles reprinted from the Journal of the
Siam Society | 100.00 |

Members receive a discount of 20% on the above prices

Conversion Rate : Baht 20.00 = 1 US dollar

PRINCIPAL AGENTS ABROAD

Luzac & Company
46 Great Russell Street
London, W.C. 1

Martinus Nijhoff
Lange Voorhout 9
The Hague

THE SIAM SOCIETY

Under Royal Patronage

Address : 131 Asoka Road (Lane 21), Bangkok, Bangkok

Telephone : 914401

G.P.O. Box 65, Bangkok

OBJECTS

"The objects of the Society shall be the investigation and encouragement of the Arts and Sciences in relation to Thailand and neighbouring countries." (From the Rules of the Siam Society, Article 2).

SUBSCRIPTION

The annual subscription for Ordinary Members is Baht 200 which is payable in advance. There is also an entrance fee of Baht 150.

Life membership fee is Baht 3,000.

Applications for membership should be addressed to the Administrative Secretary, G.P.O. Box 65, Bangkok. Application forms are also obtainable at the Society's Home.

APPLICATIONS FOR COPIES OF THE JOURNAL

Applications for copies of the *Journal* should be made to the Administrative Secretary. Purchases may be made at the Society's Home.

LIBRARY

The Library of the Society is open daily at the following hours :

Morning : 9.00-12.00 hours

Afternoon : 14.00-19.00 hours

The Library is closed on Saturday at noon and on Sunday.

Books may be consulted and borrowed during Library hours only.

Books borrowed from the Library must be returned within one month.

KAMTHIENG HOUSE

The Kamthieng House is temporarily closed for renovation.

It is hoped to re-open the House during the first quarter of 1970.

THE SIAM SOCIETY

New and forthcoming publications

Prince Dhani Niyat — Articles reprinted from the *Journal of the Siam Society*

with plates; November 1969; 100 baht

Vichin Panupong — Inter-sentence relations in modern conversational Thai

early 1970; 100 baht

François Joyaux — Etude de la seconde règne de la dynastie de Bangkok 1809-1824

early 1970; 100 baht

Mom Rajawong Pimsai Amranand — Gardening in Bangkok

profusely illustrated; early 1970; 100 baht*

* 30% reduction on orders placed before publication

In Memoriam Phya Anuman Rajadhon — Festschrift in memory of the late President of the Siam Society

early 1970; 100 baht