

**two new linguistic publications of the
SIAM SOCIETY**

vichin panupong

**INTER-SENTENCE RELATIONS IN MODERN
CONVERSATIONAL THAI**

**a study of formal features relating
sentences in a series in context**

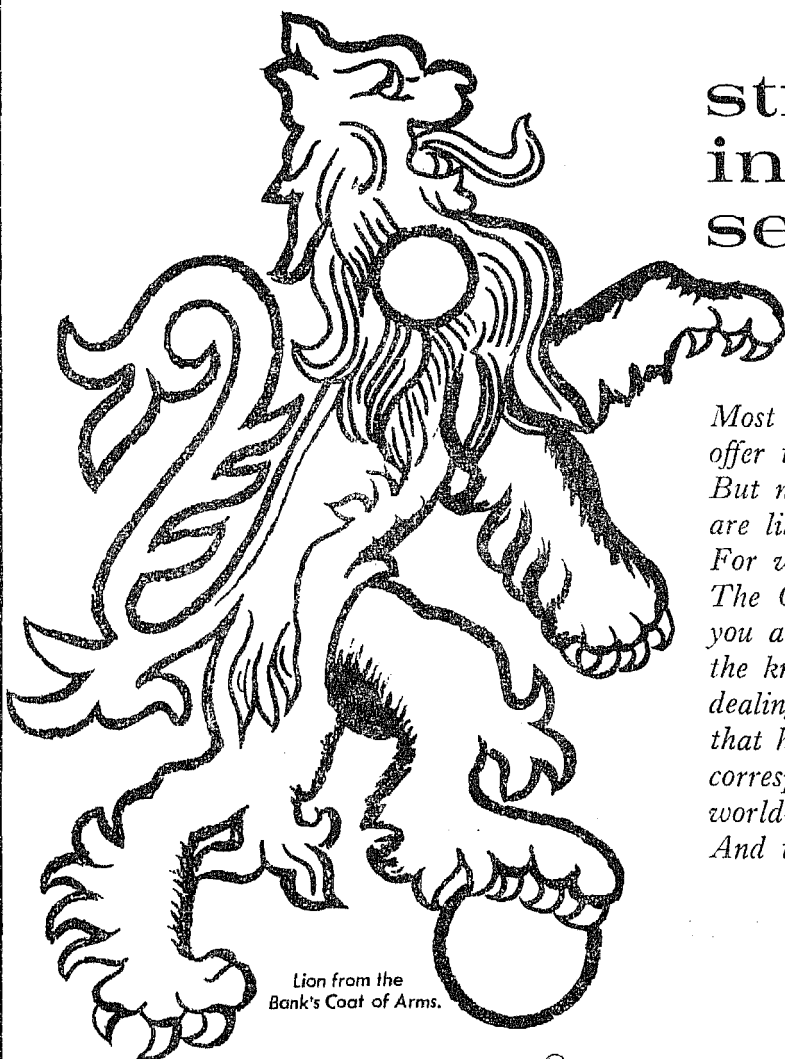
269 pp. 100 baht
published September 1970

richard davis

A NORTHERN THAI READER

**a systematic introduction to reading
the northern Thai script with reading
passages and a glossary**

91 pp. 40 baht
published October 1970



Lion from the
Bank's Coat of Arms.

strength
in
security

*Most banks
offer the same services.
But not many
are like The Chartered.
For when you bank with
The Chartered
you are confident in
the knowledge you are
dealing with a bank
that has branches and
correspondents
world-wide.
And that's a good feeling.*



THE CHARTERED BANK

(Incorporated in London by Royal Charter in 1853)

Bangkok Main Office

Saladaeng Circle, Rama 4 Road, Bangkok. Tel. 864311 (10 lines)

Rajprasong Sub-Branch: 62-68 Rajprasong Business Centre, Bangkok. Tel. 55412-3.

Bhuket Sub-Branch: 34 Pangnga Road, Bhuket. Tel. 79.

a new Siam Society publication

Jacqueline Butler

YAO DESIGN

Miss Butler as a Peace Corps volunteer spent her time collecting and studying the traditional embroidery patterns of the Yao tribeswomen. She has written the only authoritative text on the subject.

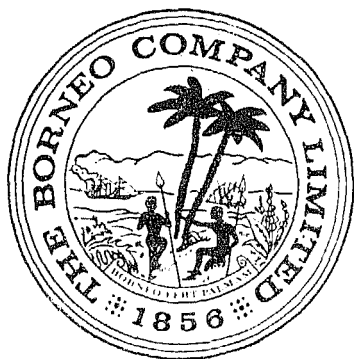
The volume has 16 pages of line colour of the actual designs and 14 full colour photographic illustrations. The cover is clothbound with a Yao design picked out on the front. There are 14 pages of text. The volume is rather larger than most Siam Society publications in size, being $8'' \times 10\frac{1}{2}''$.

published November 1970

price 80 baht

(members 20% discount)

Serving Thailand and the World



For more than a century, the scope of The Borneo Company's activities has assisted in bringing higher standards of living to the people of Thailand. Today, the company's operations play an important part in practically all fields of Thailand's commercial and economic development, thereby continuing their traditional close links with the country's progress.

In this second century of progress, The Borneo Company aggressively pursues new developments and employs modern techniques backed by intimate market knowledge to supply even better services and products for the growing needs of the Thai consumer.

MAIN ACTIVITIES IN THAILAND

- | | |
|--|---|
| <input type="checkbox"/> Marketing | <input type="checkbox"/> Pest Control |
| <input type="checkbox"/> Import & Distribution | <input type="checkbox"/> Photo Processing |
| <input type="checkbox"/> Manufacturing | <input type="checkbox"/> Travel and Tourism |
| <input type="checkbox"/> Shipping | <input type="checkbox"/> Transport & Car Hire |
| <input type="checkbox"/> Insurance | <input type="checkbox"/> Airline-Airport Handling |

The **BORNEO** Company (Thailand) Limited

1041 Silom Road • Bangkok • Thailand

Read

the investor

95 baht per year, 9 baht per copy

SIAM PUBLICATIONS LTD.

68/3 Pan Street, Silom Road, Bkk.

P.O. Box 1946 Bangkok

Tel. 32911, 32912, 32913

พุทธศาสนากับสังคมไทยปัจจุบัน



(Buddhism in Modern Thai Society)

The proceedings of a seminar in Thai
held at the Siam Society in August
1969, edited by Sulak Sivaraksa

337 pp. 20 baht

Gardening in Bangkok

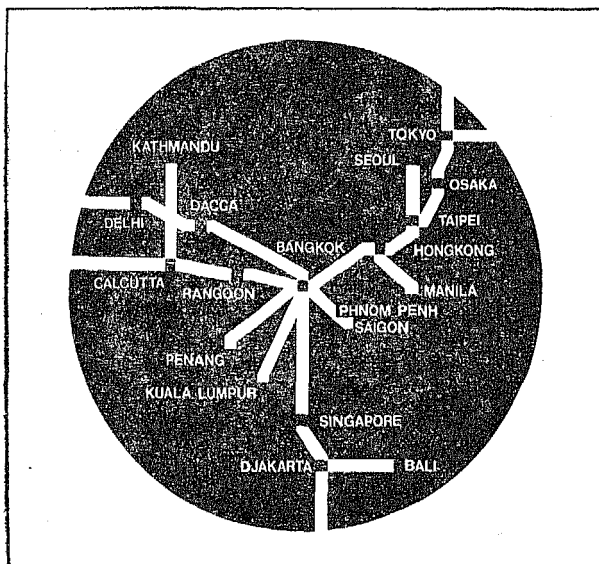
by Mom Rachawong Pimsai Amranand

Honorary Secretary, Siam Society

An indispensable guide to gardening in tropical conditions,
with 29 line drawings by M.R. Smansnid Svasti, 18 black-
and-white and 18 colour photographs, a tri-lingual list of
plant names and full index.

165 pp. 100 baht (members 20% discount) Published by
THE SIAM SOCIETY

**Thai International now
flies to far more countries in the
Orient than any other airline.**



Suddenly we fly to far more countries in the Orient than any other airline. We can take you as far north as Japan, as far south as Bali, as far east as the Philippines, as far west as India, and as far out as Nepal. In all, we can now take you to any of 15 countries throughout the Orient.

And we'll take you there with all the extravagant extras that have helped get us where we are today: food that keeps on coming and coming; drinks that no one asks you to pay for; and hostesses who are just as efficient as they are charming. Next time you fly, take Thai International. It's the airline the Orient knows best.

Contact your travel agent or:

THAI INTERNATIONAL

Siam Square, 412 Rama 1 Rd. Tel. 54181
Erawan Hotel; Dusit Thani Hotel; TAC, Larn Luang Rd;
CMMC Building 1043 Phaholyothin Rd; Don Muang.

Bangkok Bali Calcutta Dacca Delhi Djakarta Hong Kong Kathmandu Kuala Lumpur Manila Osaka Penang Phnom Penh Rangoon Saigon Seoul Singapore Taipei Tokyo

WITH THE
COMPLIMENTS
OF
THE HONGKONG AND SHANGHAI BANKING
CORPORATION

THE FIRST BANK TO BE ESTABLISHED
IN THAILAND
ALL BANKING BUSINESS TRANSACTED

2 Hongkong Bank Lane, Siphya Road
Tel. 31321-31325

With the compliments of

THE THAI DANU BANK LIMITED



KRUNG THAI BANK LIMITED

260 YAWARAJ ROAD
BANGKOK, THAILAND

P.O. BOX 453

TEL. 22230-9

**EVERY DESCRIPTION OF DOMESTIC AND FOREIGN
BANKING BUSINESS TRANSACTED via :**

Accepting Deposits.

Financing imports and exports by means of loans, overdrafts and discounts.

Issuing, confirming and negotiating letters of credit.

Handling collections.

Dealing in foreign exchange.

Transferring funds and remittances.

Safe Deposit Boxes.

**A NETWORK OF 101 BRANCHES THROUGHOUT THAILAND
FOREIGN CORRESPONDENTS IN ALL PRINCIPAL
CITIES OF THE WORLD**

Director General : **Chamras Chaturabatara**

JA-The Japan Architect : Japan's only all-English Architectural Journal.

An exciting monthly journal directed at both professional architects and general readers with an interest in Japan. **THE JAPAN ARCHITECT**, month by month and over the years, tells you everything you want to know about Japanese buildings, including how to build them. The contents include richly illustrated case studies by Japan's leading architects, news of events in the Japanese world of architecture, practical information concerning Japanese building materials and their use, and reviews of books on Japanese architecture and art.

The Japan Architect offers you an excellent opportunity to keep in touch with Japan, a country in which the power of the West has come to grips with the tradition of the East with spectacular results.

Subscription Rates :

One Year 500.00 bht.

Single copy 55.00 bht.

Please send your orders directly to :

Praepittaya Ltd. Part.

716-18 Wang Burapa

Bangkok 2, Thailand

Tel : 24283, 21986

The Banker's Bank.

In pursuing our objectives of promoting capital investment and providing medium term loans to productive industries, we at FNCDF are often pleased to be able to work with and through our Thai banking friends. Our parent, First National City Bank, similarly provides off-shore finance for and with Thailand's vigorous banking system. The First National City group is therefore pleased to serve Thailand as a "bankers' bank."

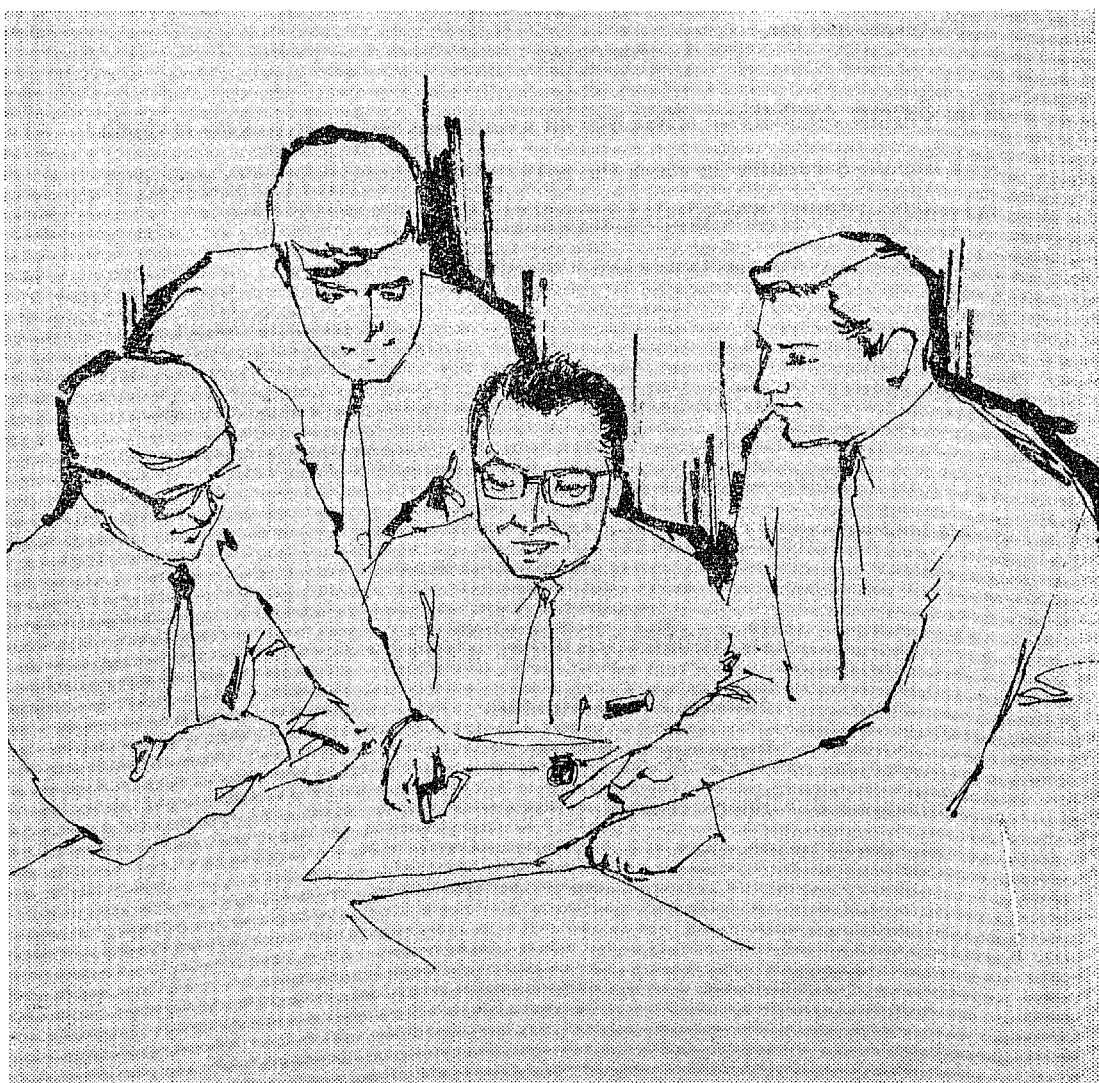


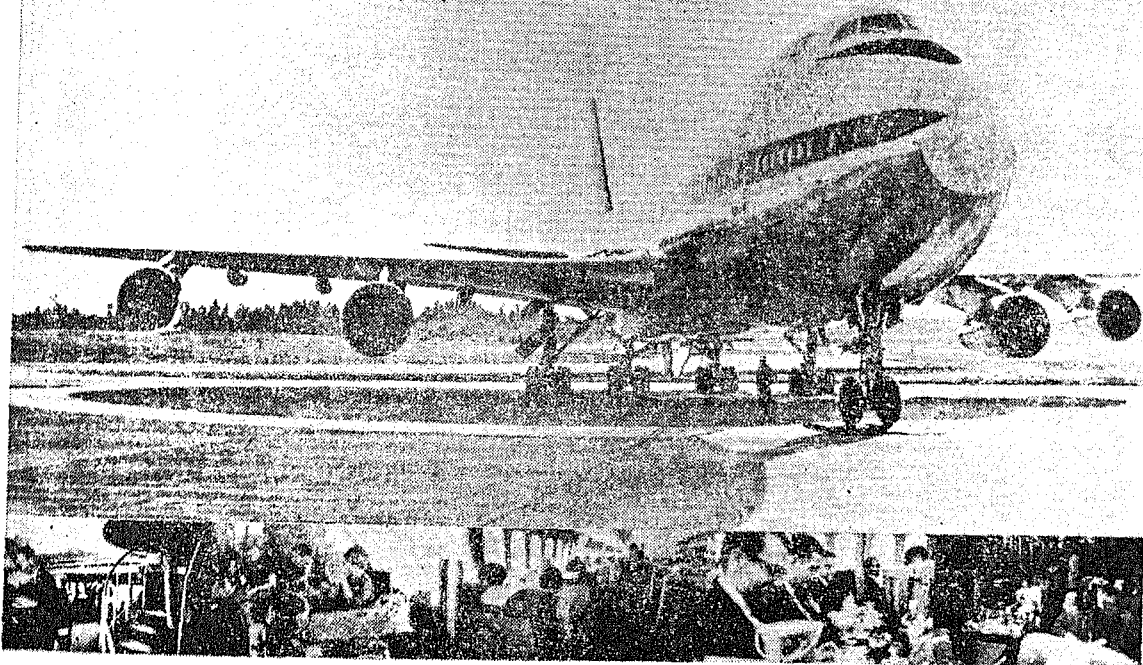
FNCDF (THAILAND) LTD.

FIRST NATIONAL CITY DEVELOPMENT FINANCE CORPORATION

A wholly-owned subsidiary of First National City Bank, New York.

South East Insurance Building, 315, Silom Road, Bangkok.





TWA presents the 747 flightseeing tour to New York.

Any airline that can afford the 747 has one.

But what makes TWA's 747 so different from the others, is her interior. That's because we asked thousands of our passengers what they wanted in a plane before we spent 25 million dollars building one.

And what you wanted was comfort. So we put fewer seats in our 747 than any other major airline. Which means more headroom, more legroom, wider aisles than ever before.

We put in seven kitchens so you can eat when you want to.

We added more hostesses too. To look after you and for you to look at. And if that isn't enough, we offer you a choice of two different movies to watch.

And we put in a computerized navigational system similar to the one that guided the Apollo spacecraft to the moon. But not because we were asked to.

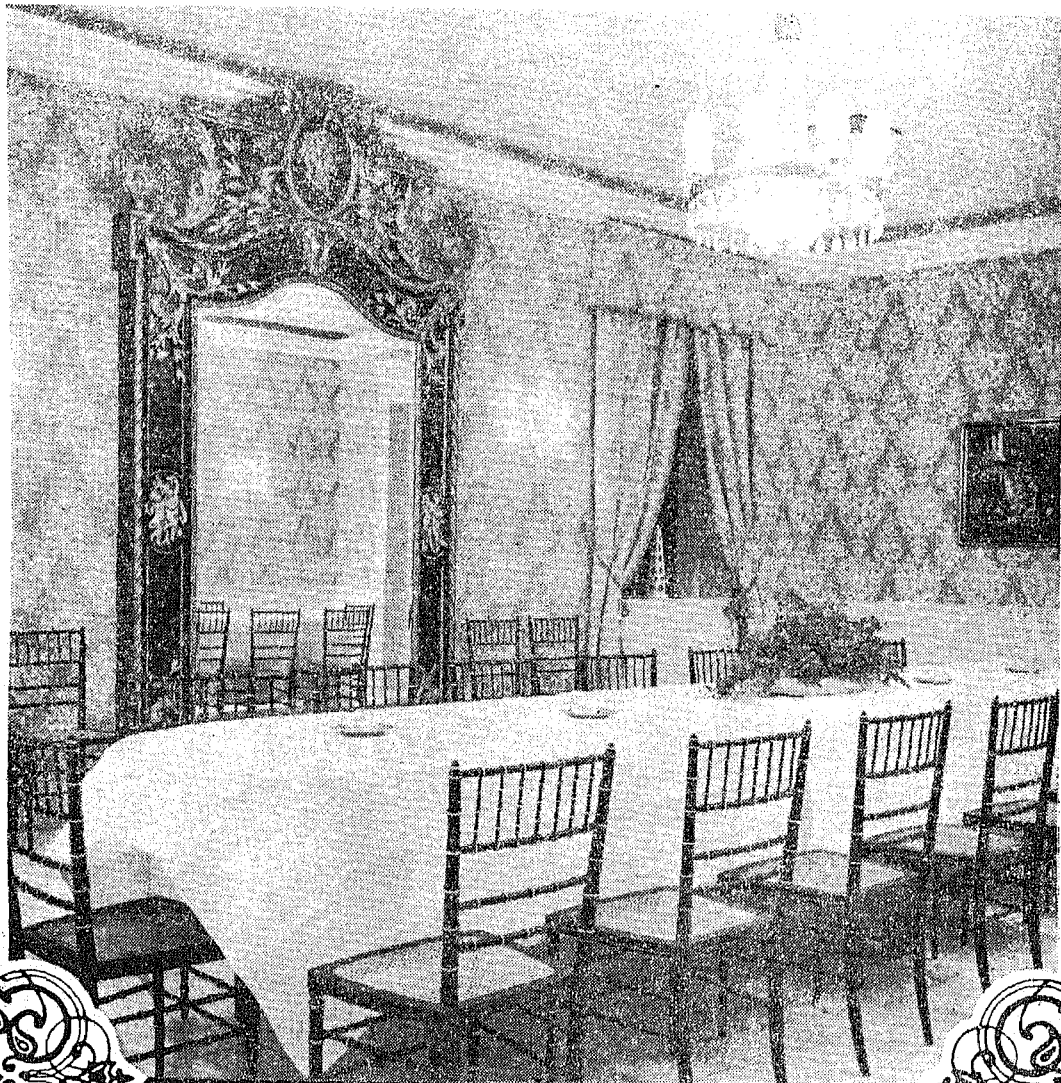
Then we built Flight Wing One at Kennedy Airport. It's the only terminal

in the world specially designed to handle the 747's. We even have our own private facilities to speed you through Customs and Immigration.

So the next time you fly to New York, fly TWA's 747. There's so much more to see and do, that once you leave your seat, you may even end up walking to New York.



The airline of America to America.



For supreme occasions The Regent Room

Travertine marble floors. Louis Quinze chairs. Exquisitely elegant chandeliers. Breathtaking mirrors. Noble crystal. Take all of these. Let the design flair of Baron Francois Duhau de Berény combine them after the grand manner of the Palais Versailles and the Court of St. James, add the gastronomic virtuosity of Gerard Musset, and place them

overlooking a torchlit courtyard terrace beside the River of Kings. The result is The Oriental's sumptuous new locale for select banquets and intimate receptions. For those most important of occasions when only superlative standards of fastidious perfection in surroundings and service can possibly be good enough. We bring you, with pride, The Regent Room.



THE ORIENTAL HOTEL

BY THE RIVER OF KINGS

Telephone 35920-9

Regent Room capacity to dine up to
No guests for cocktails up to 150 guests

THE THAI MILITARY BANK, LTD.

HEAD OFFICE

96 MANSION 2, RAJDAMNERN AVENUE

BANGKOK

TEL. 24675-9

BANGKOK BRANCHES : RAJPRASONG

AIRPORT

HUA MAK

KLONG TOEI

PROVINCIAL BRANCHES: SAMUT PRAKAN

CHON BURI

SATTAHIP

NAKHON-RATCHASIMA

All Types of Commercial Banking Business Conducted

หอมปากหอมเขาราวใจ

อมแล้ว ปากหอม
ชุ่มคอ ชื่นใจ
นิยมทั่วไป

บริษัท เขาราช จำกัด
730 ถนนภาณุรังษี วังบูรพาฯ พระนคร

**A WAY OF
LIFE IS CHANGING.....** For the
better. In Thailand, as new roads augment the traditional waterway
system, the face of the country is changing. New factories, new
schools, new farms, new hospitals are appearing in the wake of the
bulldozer. Progress and prosperity is the reward for Thailand as new
areas develop, new industries are formed and new highways take
shape. Shell is happy to have a hand in this changing scene. Shell
fuels and lubricants are on the job throughout Thailand, moving the
machines that pave the way to new prosperity.

FORWARD LOOKING PEOPLE GO SHELL

THAI WATANA PANICH

is proud to present

Buddhism Explained by Bhikkhu Khantipalo (xvi + 200 pages + 24 illustrations) Baht 120.00

"The book should make a powerful appeal to two kinds of persons. First, those largely ignorant about Buddhism and who are sincerely eager to repair their ignorance, will find in it exactly what they need . . . Second, a good many people with a fairly intensive knowledge of Buddhism would be happy to have such a work on their bookshelves because it provides a complete summary of all the essentials of Buddhist teaching and practice, and can be used as a handy reference book for materials that usually have to be hunted out from more than one source . . . Thai students going abroad are among those to whom the book is most warmly recommended."

John Blofeld *Visakha Puja* 2513

Vidyasara Paridasna วิทยสารปริทัศน์

the fortnightly intellectual magazine in Thai is now read widely by Thai students abroad as well as scholars who are interested in Siam.

(S. Sivaraksa : Editor) Subscription rate :

In Siam 70 bath per annum

Abroad 120 baht per annum

Thai Wattana Panich

599 Maitrichit Road, Bangkok

Tel. 20807, 28242, 20114

THE SOCIAL SCIENCE ASSOCIATION PRESS OF THAILAND

Books on Buddhism, History and Siamese Culture

Opening of the Wisdom Eye

by The Dalai Lama

The Wisdom Gone Beyond

Preface by H.H. Prince Dhaninivat

Teaching Dhamma by Pictures

by Bhikkhu Buddhadasa

Patimokkha

Translated by Nanamoli Thera

Essays on Thai Folklore

by Phya Anuman Rajadhon

From Ancient Thai to Modern Dialects

by J. Marvin Brown

Notes on the Customs of Cambodia

by Chou Ta-Kuan

Aspects of Siamese Kingship in the Seventeenth Century

by Jeremy Kemp

All these books are published by **The Social Science Review and The Social Science Association Press of Thailand**, Chula Soi 2, Phya Thai Road, Bangkok 5, Tel. 57622.

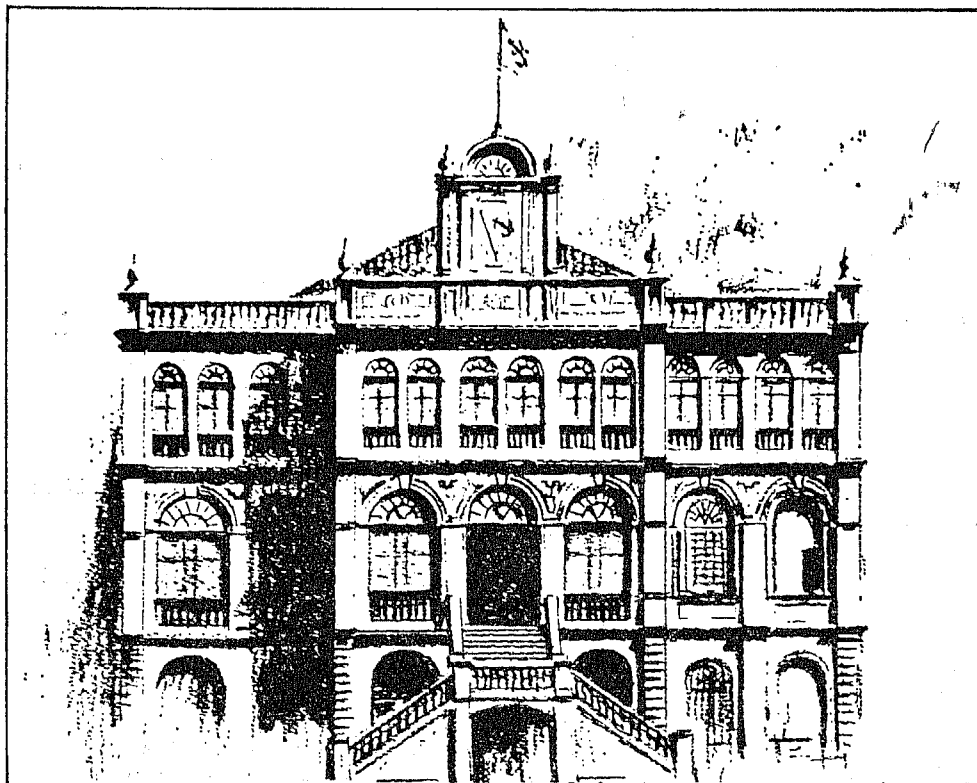
WITH THE COMPLIMENTS OF



ESSO STANDARD THAILAND LIMITED
ESSO CHEMICAL THAILAND LIMITED

SHIPPING · TRADE · INDUSTRY
PLANTATIONS · WAREHOUSING · INSURANCE

EAC



THE EAST ASIATIC COMPANY LIMITED
THAILAND

IN MEMORIAM PHYA ANUMAN RAJADHON

contributions in memory of the late President of the Siam Society

edited by

Tej Bunnag & Michael Smithies

CONTENTS

Education

David K. Wyatt

Almost Forgotten : Ban Phraya Nana School

Literature

S. Singaravelu

The Legends of the Nāga-Princess in South India and South-east Asia

Karuna Kusalasaya &
Ruengurai Kusalasaya

Phya Anuman and Indology (in Thai)

Language

Prince Wan Waithayakon
Udom Warotamasikkkhadit &
David Londe
Vichin Panupong
Prince Dhani Nivat

Coining Thai Words

Computerized Alphabetization of Thai
The Classification of Consonants in Thai (in Thai)
The Transcription of Siamese

Anthropology

Jeremy Kemp
Jane Bunnag
William & Kampan Klausner

Initial Marriage Residence in Rural Thailand
Monk-Layman Interaction in Central Thai Society
Hua Paw Tales

History

Kachorn Sukhabanij
Gordon H. Luce
A.B. Griswold & Prasert na
Nagara
Charles F. Keyes
Stephen Greene

Proto-Thai History (in Thai)
Aspects of Pagan History—Later Period

Devices and Expedients, Vat Pa Mok 1727 A.D.
New Evidence on Northern Thai Frontier History
King Wachirawut's Policy of Nationalism

Art

Charles Nelson Spinks
Clare S. Rosenfield

The Covered Bowls of the Sawankhalok Kilns
The Mythical Animal Statues at the Prasat Phrathepphabidon

Cartography

Sumet Jumsai
Victor Kennedy

The Reconstruction of the City Plan of Ayudhya
An Indigenous Early Nineteenth Century Map of Central
and Northeast Thailand
The Fortifications of Chiang Sen

Hans Penth

Personal Views

Lucien M. Hanks & Jane
R. Hanks
William L. Bradley
Sulak Sivaraksa

Travellers Among People
What a Christian has learned from the Buddhists
Phya Anuman : Common Man or Genius (in Thai)

Published July 1970

397 pp. 94 pp. plates 100 baht (paperback)

120 baht (bound)

Contributions

Contributions to the *Journal* should be sent by registered mail to the Honorary Editor on single sides of quarto paper, typed and with double spacing. Footnotes should appear at the end. All contributions must be accompanied by a short biographical note about the author. The deadline for the January issue is 1 July and for the July issue is 1 February.

EDITORIAL AND PUBLICATIONS COMMITTEE

Chairman : Mr. Michael Smithies, Honorary Editor,
Journal of the Siam Society

Honorary Editorial

Assistant : Mrs. Nancie Eskey

Advertising Manager : Mr. Euayporn Kerdchouay

Members : Dr. Tej Bunnag
Dr. Yongyuth Yuthavong

ADVERTISING RATES

Full page : 1,000 baht per issue

Half page : 600 baht per issue

Quarter page: 400 baht per issue

Page size : $9\frac{1}{2}'' \times 7''$

Text to be submitted by 1st October for January issue, 1st April for July issue.

PUBLICATIONS OF THE SIAM SOCIETY

	Price (Baht)
1. <i>The Journal (JSS)</i> —per number	40
<i>The Journal (JSS)</i> —back numbers before 1946 (Vols. 1-33 and 41-45 sold out) ...	60
2. Index to the Journal (JSS), Volumes I to XXV	Sold out
3. Index to the Journal (JSS), Volumes XXVI to XL	Sold out
4. <i>Florae Siamensis Enumeratio</i> —per number (Vol. 1 & Vol. 2 pts. 1-2 sold out) Vol. 3	30
5. <i>The Natural History Bulletin (NHB)</i> —per number (Vol. 1 sold out) Vol. 2 + ...	30
6. The commemorative reprint volumes published on the occasion of the Society's 50th Anniversary	
Vols. I & II (1954) Selected reprints from JSS paper	100
bound	120
Vol. III (1959) Early History and Ayudhya	Sold out
Vol. IV (1959) Lopburi, Bangkok, Bhuket	50
Vol. V & VI (1959) Relations with Burma each	50
Vol. VII (1959) Relations with Portugal, Holland and the Vatican	50
Vol. VIII (1959) Relations with France, England and Denmark	50
Vol. IX (1961) Dr. R.S. le May: <i>The Coinage of Siam</i>	Sold out
Vol. X (1961) Studies of old Siamese Coins	50
7. Erik Seidenfaden: <i>The Thai Peoples</i> 2nd ed. 1967	50
8. Charles Nelson Spinks: <i>The Ceramic Wares of Siam</i> ill. 1965	80
9. Gunnar Seidenfaden and Tem Smitinand:	
<i>The Orchids of Thailand</i> A Preliminary List, 1959, Part 1	45
1959, Part II, 1	45
1960, Part II, 2	75
1961, Part III	75
1963, Part IV, 1	75
1965, Part IV, 2 (completed)	100
10. Gordon Young: <i>The Hill Tribes of Northern Thailand</i>	
ill. 4th edition, 1968	70
11. Prince Damrong Rajanubhab:	
<i>A History of Buddhist Monuments in Siam</i> ill., 1962	Sold out
12. Albert H. Banner and Dora M. Banner:	
<i>The Alpheid Shrimp of Thailand</i> ill., 1966	80
13. John Black: <i>The Lofty Sanctuary of Khao Phra Vihar</i> , 1955	20
14. <i>Felicitation Volumes of Southeast-Asian Studies</i>	
offered to Prince Dhani Nivat, 1965. Volumes I & II each	80
15. <i>The Kamthieng House</i> , An Introduction, ill., 1966 paper	50
bound	70
16. Larry Sternstein and Carl Springer:	
<i>An Annotated Bibliography of Material Concerning Southeast</i>	
<i>Asia from Petermanns Geographische Mitteilungen 1855-1966</i> , 1967	100
17. Prince Dhani Nivat: <i>Articles reprinted from the Journal of</i>	
<i>the Siam Society</i> , ill., 1969 paper	100
bound	120
18. พุทธศาสนากับสังคมไทยปัจจุบัน (Proceedings of a seminar on	
Buddhism in Modern Thai Society), 1970	20
19. ed. Tej Bunnag and Michael Smithies: <i>In Memoriam Phya Anuman</i>	
<i>Rajadhon</i> ill., 1970 paper	120
bound	150
20. Pimsai Amranand: <i>Gardening in Bangkok</i> ill., 1970	100
21. Vichin Panupong: <i>Inter-sentence relations in modern conversational Thai</i> , 1970	100
22. François Joyaux: <i>Etude du règne de Rama II</i> (printing 1970)	100
23. Richard Davis: <i>A Northern Thai Reader</i> 1970	40
24. Jacqueline Butler: <i>Yao Design</i> , ill., 1970	80

THE SIAM SOCIETY

Under Royal Patronage

Address : 131 Soi Asoke (Soi 21) Sukhumwit Bangkok

Telephone : 914401

G.P.O. Box 65 Bangkok

OBJECTS

"The objects of the Society shall be the investigation and encouragement of the Arts and Sciences in relation to Thailand and neighbouring countries." (From the Rules of the Siam Society, Article 2)

SUBSCRIPTION

The annual subscription for Ordinary Members is Baht 200 which is payable in advance. There is also an entrance fee of Baht 150.

Life membership fee is Baht 3,000. Student members pay no entrance fee and their annual subscription is Baht 50.

Applications for membership should be addressed to the Administrative Secretary, G.P.O. Box 65, Bangkok. Application forms are also obtainable at the Society's home.

APPLICATIONS FOR COPIES OF THE JOURNAL

Applications for copies of the *Journal* should be made to the Administrative Secretary. Purchases may be made at the Society's home.

LIBRARY

The library of the Society is open Tuesday to Saturday at the following hours :

Morning : 9.00-12.00

Afternoon : 13.00-19.00

The library and office are closed on Sundays and Mondays.

Books may be consulted and borrowed during library hours only.

Books borrowed from the library must be returned within one month.

KAMTHIENG HOUSE

The Kamthieng House open Tuesdays, Fridays and Saturdays
from 9.00 a.m. to 12.00 noon.

THE SIAM SOCIETY

**New publications
of the last six months**

Vichin Panupong — Inter-sentence relations in modern conversational Thai
299 pp. 100 baht

Richard Davis — A Northern Thai Reader
91 pp. 40 baht

Jacqueline Butler — Yao Design
**14 pages of text, with 16 pages of full colour design reproductions
and 14 full colour photographic illustrations**
cloth bound 80 baht
