

IN MEMORIAM PHYA ANUMAN RAJADHON
contributions in memory of the late President of the Siam Society

edited by
Tej Bunnag & Michael Smithies

CONTENTS

Education

David K. Wyatt

Almost Forgotten: Ban Phraya Nana School

Literature

S. Singaravelu

The Legends of the Nāga-Princess in South India and South-east Asia

Karuna Kusalasaya &
Ruengurai Kusalasaya

Phya Anuman and Indology (in Thai)

Language

Prince Wan Waithayakon
Udom Warotamasikkkhadit &
David Londe
Vichin Panupong
Prince Dhani Nivat

Coining Thai Words

Computerized Alphabetization of Thai
The Classification of Consonants in Thai (in Thai)
The Transcription of Siamese

Anthropology

Jeremy Kemp
Jane Bunnag
William & Kampan Klausner

Initial Marriage Residence in Rural Thailand
Monk-Layman Interaction in Central Thai Society
Hua Paw Tales

History

Kachorn Sukhabanij
Gordon H. Luce
A.B. Griswold & Prasert na
Nagara
Charles F. Keyes
Stephen Greene

Proto-Thai History (in Thai)
Aspects of Pagan History—Later Period
Devices and Expedients, Vat Pa Mok 1727 A.D.
New Evidence on Northern Thai Frontier History
King Wachirawut's Policy of Nationalism

Art

Charles Nelson Spinks
Clare S. Rosenfield

The Covered Bowls of the Sawankhalok Kilns
The Mythical Animal Statues at the Prasat Phrathepphabidon

Cartography

Sumet Jumsai
Victor Kennedy

The Reconstruction of the City Plan of Ayudhya
An Indigenous Early Nineteenth Century Map of Central
and Northeast Thailand
The Fortifications of Chiang Sen

Hans Penth

Personal Views

Lucien M. Hanks & Jane
R. Hanks
William L. Bradley
Sulak Sivaraksa

Travellers Among People
What a Christian has learned from the Buddhists
Phya Anuman: Common Man or Genius (in Thai)

GARDENING IN BANGKOK

by Mom Rachawong Pimsai Amranand

Honorary Secretary, Siam Society

An indispensable guide to gardening in tropical conditions, with 29 line drawings by M.R. Smansnid Svasti, 18 black-and-white and 18 colour photographs, a tri-lingual list of plant names and full index.

165 pp. 100 baht (members 20% discount) Published by THE SIAM SOCIETY

A new Siam Society publication

YAO DESIGN

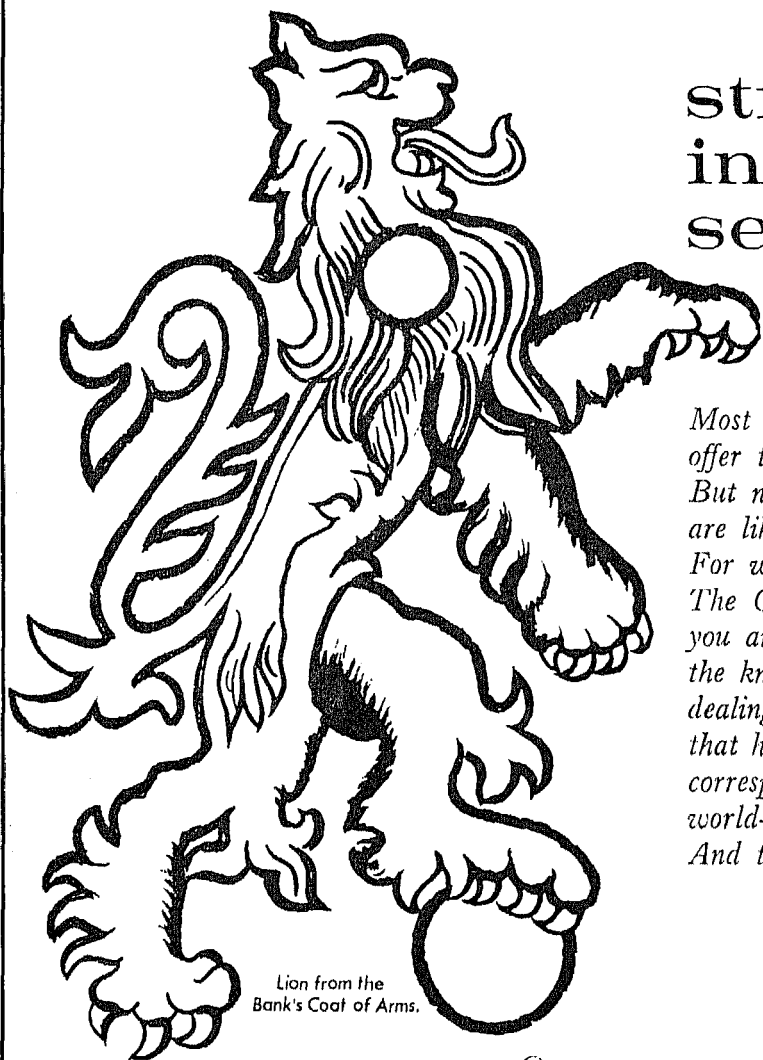
by Jacqueline Butler

Miss Butler as a Peace Corps volunteer spent her time collecting and studying the traditional embroidery patterns of the Yao tribeswomen. She has written the only authoritative text on the subject.

The volume has 16 pages of line colour of the actual designs and 14 full colour photographic illustrations. The cover is clothbound with a Yao design picked out on the front. There are 14 pages of text. The volume is rather larger than most Siam Society publications in size, being 8" x 10½".

Published November 1970

Price 80 baht (members 20% discount)



Lion from the
Bank's Coat of Arms.

strength
in
security

*Most banks
offer the same services.
But not many
are like The Chartered.
For when you bank with
The Chartered
you are confident in
the knowledge you are
dealing with a bank
that has branches and
correspondents
world-wide.
And that's a good feeling.*



THE CHARTERED BANK

(Incorporated in London by Royal Charter in 1853)

Bangkok Main Office

Saladaeng Circle, Rama 4 Road, Bangkok. Tel. 864311 (10 lines)

Rajprasong Sub-Branch: 62-68 Rajprasong Business Centre, Bangkok. Tel. 55412-3.

Bhuket Sub-Branch: 34 Bhuket Road, Bhuket. Tel. 79.



TWA presents the 747 flightseeing tour to New York.

Any airline that can afford the 747 has one.

But what makes TWA's 747 so different from the others, is her interior. That's because we asked thousands of our passengers what they wanted in a plane before we spent 25 million dollars building one.

And what you wanted was comfort. So we put fewer seats in our 747 than any other major airline. Which means more headroom, more legroom, wider aisles than ever before.

We put in seven kitchens so you can eat when you want to.

We added more hostesses too. To look after you and for you to look at. And if that isn't enough, we offer you a choice of two different movies to watch.

And we put in a computerized navigational system similar to the one that guided the Apollo spacecraft to the moon. But not because we were asked to.

Then we built Flight Wing One at Kennedy Airport. It's the only terminal

in the world specially designed to handle the 747's. We even have our own private facilities to speed you through Customs and Immigration.

So the next time you fly to New York, fly TWA's 747. There's so much more to see and do, that once you leave your seat, you may even end up walking to New York.



The airline of America to America.

Trans World Airlines Inc., Dusit Thani Hotel, Rama IV, Road, Bangkok. Tel. 86-1864

With the compliments of

THE THAI DANU BANK LIMITED

The Banker's Bank.

In pursuing our objectives of promoting capital investment and providing medium term loans to productive industries, we at FNCDF are often pleased to be able to work with and through our Thai banking friends. Our parent, First National City Bank, similarly provides off-shore finance for and with Thailand's vigorous banking system. The First National City group is therefore pleased to serve Thailand as a "bankers' bank."

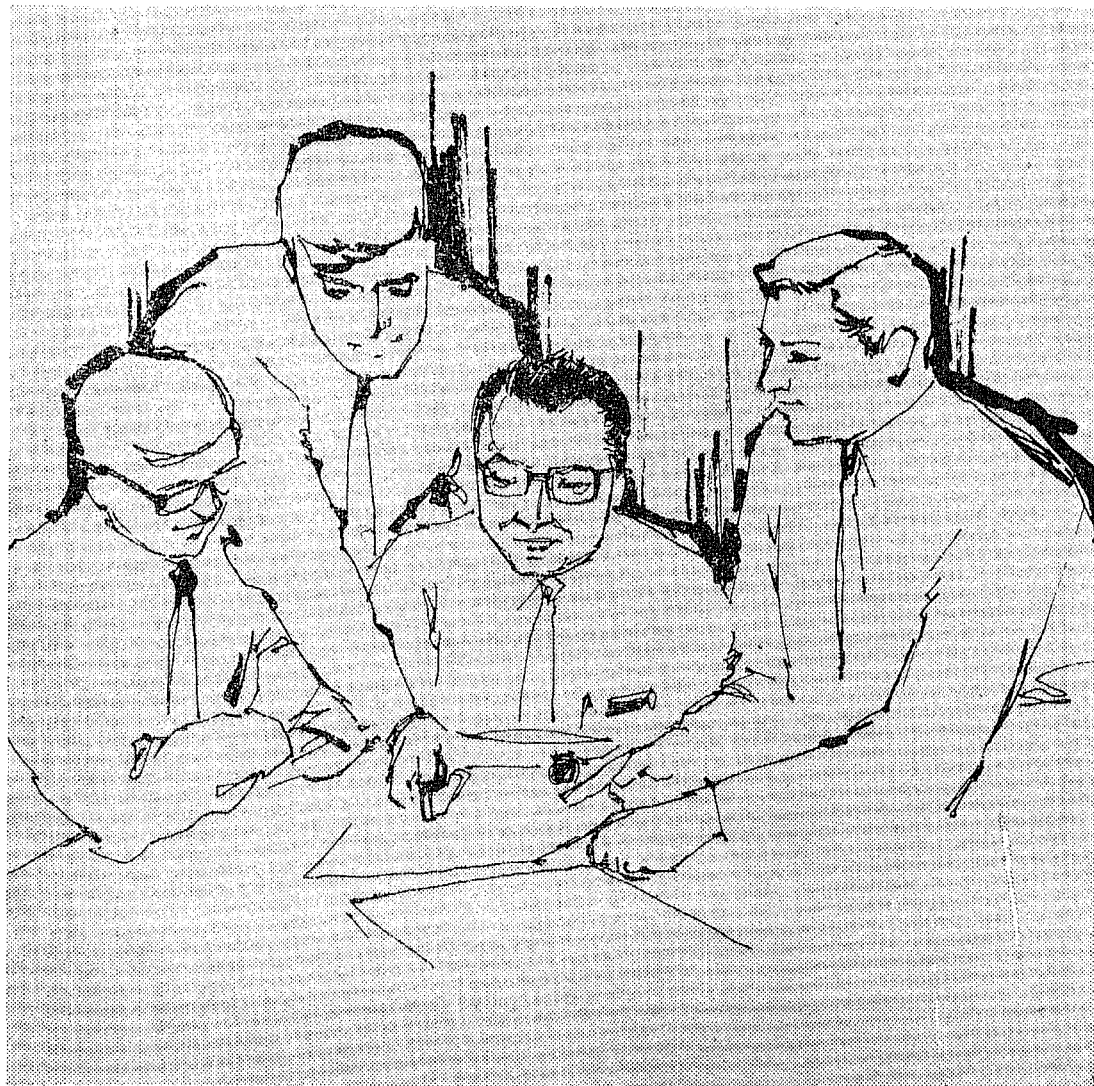


FNCDF (THAILAND) LTD.

FIRST NATIONAL CITY DEVELOPMENT FINANCE CORPORATION

A wholly-owned subsidiary of First National City Bank, New York.

South East Insurance Building, 315, Silom Road, Bangkok.



Serving Thailand and the World



For more than a century, the scope of The Borneo Company's activities has assisted in bringing higher standards of living to the people of Thailand. Today, the company's operations play an important part in practically all fields of Thailand's commercial and economic development, thereby continuing their traditional close links with the country's progress.

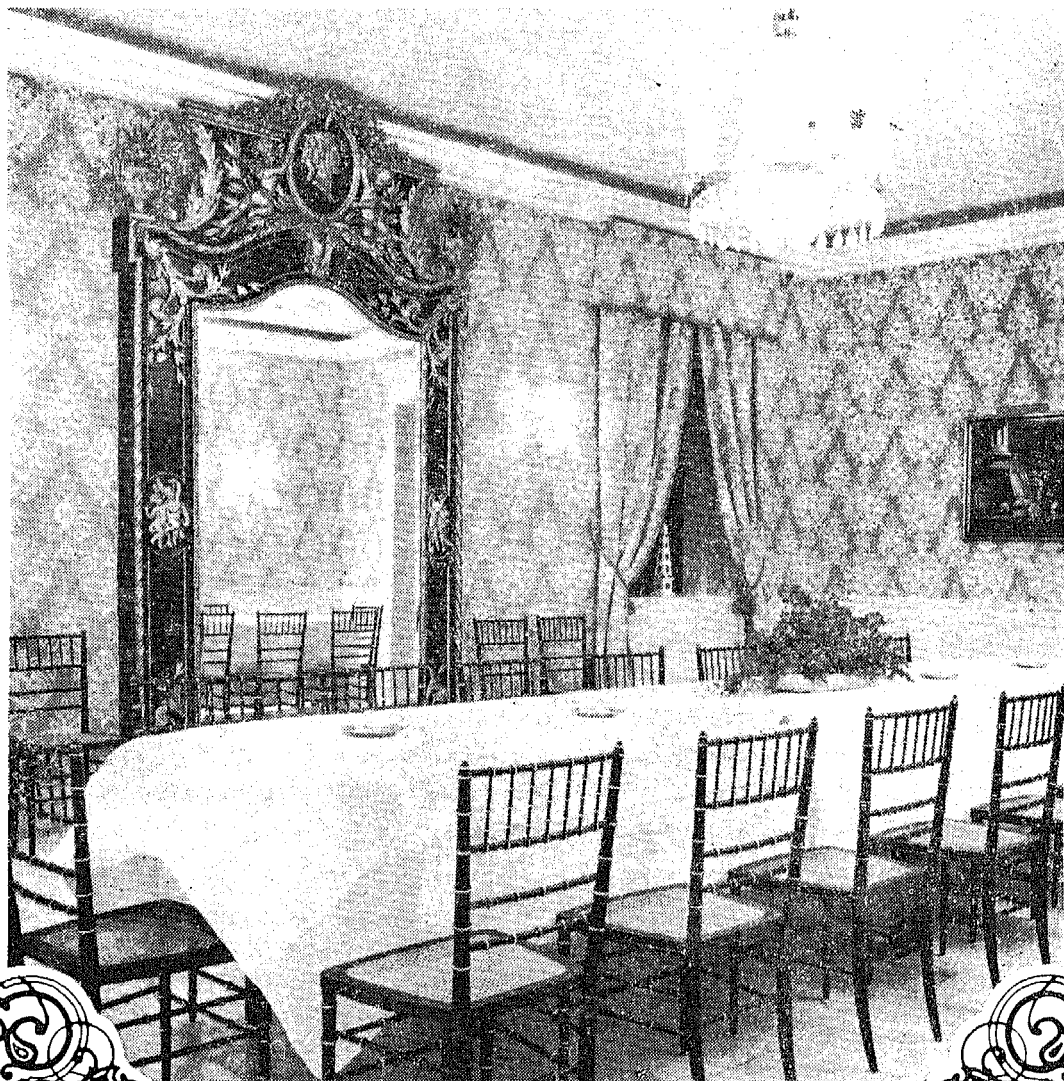
In this second century of progress, The Borneo Company aggressively pursues new developments and employs modern techniques backed by intimate market knowledge to supply even better services and products for the growing needs of the Thai consumer.

MAIN ACTIVITIES IN THAILAND

- | | |
|--|---|
| <input type="checkbox"/> Marketing | <input type="checkbox"/> Pest Control |
| <input type="checkbox"/> Import & Distribution | <input type="checkbox"/> Photo Processing |
| <input type="checkbox"/> Manufacturing | <input type="checkbox"/> Travel and Tourism |
| <input type="checkbox"/> Shipping | <input type="checkbox"/> Transport & Car Hire |
| <input type="checkbox"/> Insurance | <input type="checkbox"/> Airline-Airport Handling |

The **BORNEO** Company (Thailand) Limited

1041 Silom Road • Bangkok • Thailand



For supreme occasions The Regent Room

Travertine marble floors. Louis Quinze chairs. Exquisitely elegant chandeliers. Breathtaking mirrors. Noble crystal. Take all of these. Let the design flair of Baron Francois Duhaud de Berenx combine them after the grand manner of the Palais Versailles and the Court of St. James, add the gastronomic virtuosity of Gerard Musset, and place them

overlooking a torchlit courtyard terrace beside the River of Kings. The result is The Oriental's sumptuous new locale for select banquets and intimate receptions. For those most important of occasions when only superlative standards of fastidious perfection in surroundings and service can possibly be good enough. We bring you, with pride, The Regent Room.



THE ORIENTAL HOTEL

BY THE RIVER OF KINGS

Telephone: 39920-9

Regent Room capacity: 10 time, up to 80 guests for cocktails, up to 150 guests.

หมากหอม เขาวราช

อมแล้ว ปากหอม
ชุ่มคอ ชื่นใจ
นิยมทั่วไป



บริษัท เขาวราช จำกัด

730 ถนนกาญจนาภิเษก กรุงเทพฯ พระนคร

Read

the
investor

95 baht per year, 9 baht per copy

SIAM PUBLICATIONS LTD.

68/3 Pan Street, Silom Road, Bkk.

P.O. Box 1946 Bangkok

Tel. 32911, 32912, 32913

พุทธศาสนากับสังคมไทยปัจจุบัน

(Buddhism in Modern Thai Society)

The proceedings of a seminar in Thai

held at the Siam Society in August

1969, edited by Sulak Sivaraksa

337 pp. 20 baht

Contributions

Contributions to the *Journal* should be sent by registered mail to the Honorary Editor on single sides of quarto paper, typed and with double spacing. Footnotes should appear at the end. All contributions must be accompanied by a short biographical note about the author. The deadline for the January issue is 1 August and for the July issue is 1 February.

EDITORIAL AND PUBLICATIONS COMMITTEE

Chairman	: Mr. Michael Smithies, Honorary Editor, <i>Journal of the Siam Society</i>
Reviews Editor	: Dr. Tej Bunnag
Education and Science	
Advisor	: Dr. Sippanondha Ketudat
Honorary Editorial	
Assistant	: Mrs. Nancie Eskey
Advertising Manager	: Mr. Euayporn Kerdchouay

ADVERTISING RATES

Full page	: 1,000 baht per issue
Half page	: 600 baht per issue
Quarter page	: 400 baht per issue
Page size	: 9½" x 7"

Text to be submitted by 1st October for January issue, 1st April for July issue

PUBLICATIONS OF THE SIAM SOCIETY

	Price (Baht)
<i>The Journal (JSS)</i> —per number	40
<i>The Journal (JSS)</i> —back numbers before 1946 (Vols. 1-33 and 38-45 sold out) ...	60
Index to the <i>Journal (JSS)</i> , Volumes 1 to 50	15
The commemorative reprint volumes published on the occasion of the Society's 50th Anniversary	
Vols. I & II (1954) Selected reprints from <i>JSS</i> pp. 290 & pp. 300 paper	100
	bound 120
Vol. III (1959) Early History and Ayudhya	Sold out
Vol. IV (1959) Lopburi, Bangkok, Bhuket pp. 304... ..	50
Vol. V & VI (1959) Relations with Burma pp. 207 & pp. 228 each	50
Vol. VII (1959) Relations with Portugal, Holland and the Vatican pp. 276	50
Vol. VIII (1959) Relations with France, England and Denmark pp. 258	50
Vol. IX (1961) Dr. R.S. le May: <i>The Coinage of Siam</i>	Sold out
Vol. X (1961) Studies of old Siamese Coins pp. 148	50
<i>The Kamthieng House</i> , An Introduction, ill., 1966 pp. 51 ill paper	50
	bound 70
<hr/>	
พุทธศาสนากับสังคมไทยปัจจุบัน (Proceedings of a seminar on Buddhism in Modern Thai Society), 1970 pp. 337	20
<hr/>	
Jacqueline Butler: <i>Yao Design</i> , pp. 35 ill. 1970	80
Richard Davis: <i>A Northern Thai Reader</i> pp. 91 1970	40
Prince Dhani Nivat: <i>Articles reprinted from the Journal of the Siam Society</i> , ill., pp. 194 1969 paper	100
	bound 120
<i>Felicitatation Volumes of Southeast-Asian Studies</i>	
offered to Prince Dhani Nivat, 1965. Volumes 1 & 2 pp. 349 ill. set	160
Pimsai Amranand: <i>Gardening in Bangkok</i> pp. 165 ill., 1970	100
Erik Seidenfaden: <i>The Thai Peoples</i> 2nd ed. 1967	50
Charles Nelson Spinks: <i>The Ceramic Wares of Siam</i> pp. 196 ill. second edition 1971	100
ed. Tej Bunnag and Michael Smithies: <i>In Memoriam Phya Anuman Rajadhon</i> pp. 397 ill. 1970 paper	120
	bound 150
Gordon Young: <i>The Hill Tribes of Northern Thailand</i> ill. 5th edition, reprinting	

Natural History

The Natural History Bulletin (NHB)—per number (Vol. 1 sold out) Vol. 2 +	30
Florae Siamensis Enumeratio—per number (Vol. 1 & Vol. 2 pts. 1-2 sold out) Vol. 3	30
Albert H. Banner and Dora M. Banner:	
<i>The Alpheid Shrimp of Thailand</i> pp. 169 ill. 1966	80
Gunnar Seidenfaden and Tem Smitinand:	
<i>The Orchids of Thailand</i> A Preliminary List, Parts I-IV Complete in one volume 1959-65 pp. 870 ill. bound	450

THE SIAM SOCIETY

Under Royal Patronage

Address: 131 Soi Asoke (Soi 21) Sukhumvit Bangkok

Telephone: 914401

G.P.O. Box 65 Bangkok

OBJECTS

"The objects of the Society shall be the investigation and encouragement of the Arts and Sciences in relation to Thailand and neighbouring countries." (From the Rules of the Siam Society, Article 2)

SUBSCRIPTION

The annual subscription for Ordinary Members is Baht 200 which is payable in advance. There is also an entrance fee of Baht 150.

Life membership fee is Baht 3,000. Student members pay no entrance fee and their annual subscription is Baht 50.

Applications for membership should be addressed to the Administrative Secretary, G.P.O. Box 65, Bangkok. Application forms are also obtainable at the Society's home.

APPLICATIONS FOR COPIES OF THE JOURNAL

Applications for copies of the *Journal* should be made to the Administrative Secretary. Purchases may be made at the Society's home.

APPLICATIONS FOR COPIES OF THE NATURAL HISTORY BULLETIN

Copies of the Natural History Bulletin (NHB) are issued free to members on request only, one copy per member. Additional copies may be bought. Members wishing to receive NHB regularly should write to the Administrative Secretary.

LIBRARY

The library of the Society is open Tuesday to Saturday at the following hours:

Morning:	9.00-12.00
Afternoon:	13.00-19.00

The library and office are closed on Sundays and Mondays.

Books may be consulted and borrowed during library hours only.

Books borrowed from the library must be returned within one month.

KAMTHIENG HOUSE

The Kamthieng House opens Tuesdays, Fridays and Saturdays
from 9.00 a.m. to 12.00 noon.

THE SIAM SOCIETY

Reprinted

March 1971

Charles Nelson Spinks — *The Ceramic Wares of Siam*
profusely illustrated with more than
50 pages of plates
the text of this second edition has been
revised in light of recent research

192 pages

full colour cover

100 baht