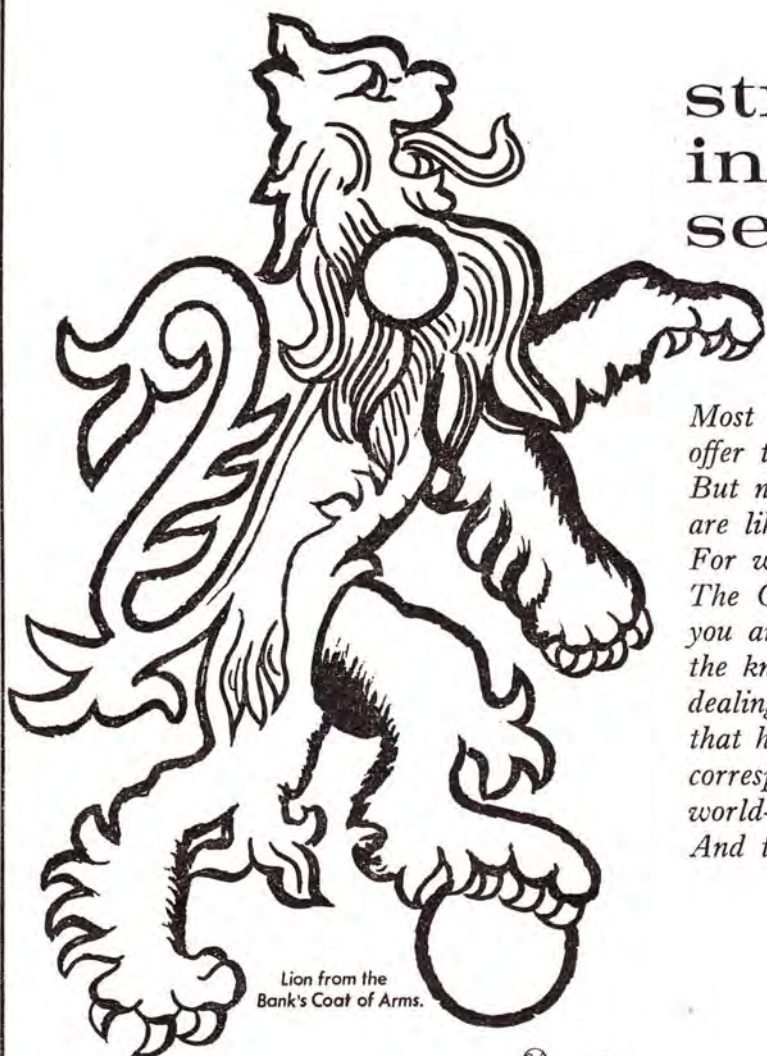


ERRATUM

In Wilhelm G. Solheim II's article entitled "The "New Look" of Southeast Asian Prehistory", on page 13, second paragraph, line 7, for the "... second century B.C...", please read the "... first century A.D. ...".



Lion from the
Bank's Coat of Arms.

strength
in
security

*Most banks
offer the same services.
But not many
are like The Chartered.
For when you bank with
The Chartered
you are confident in
the knowledge you are
dealing with a bank
that has branches and
correspondents
world-wide.
And that's a good feeling.*



THE CHARTERED BANK

(Incorporated in London by Royal Charter in 1853)

Bangkok Main Office

Saladaeng Circle, Rama 4 Road, Bangkok. Tel. 864311 (10 lines)

Rajprasong Sub-Branch: 62-68 Rajprasong Business Centre, Bangkok. Tel. 55412-3.

Bhuket Sub-Branch: 34 Bhuket Road, Bhuket. Tel. 79.

Serving Thailand and the World



For more than a century, the scope of The Borneo Company's activities has assisted in bringing higher standards of living to the people of Thailand. Today, the company's operations play an important part in practically all fields of Thailand's commercial and economic development, thereby continuing their traditional close links with the country's progress.

In this second century of progress, The Borneo Company aggressively pursues new developments and employs modern techniques backed by intimate market knowledge to supply even better services and products for the growing needs of the Thai consumer.

MAIN ACTIVITIES IN THAILAND

- | | |
|--|---|
| <input type="checkbox"/> Marketing | <input type="checkbox"/> Pest Control |
| <input type="checkbox"/> Import & Distribution | <input type="checkbox"/> Photo Processing |
| <input type="checkbox"/> Manufacturing | <input type="checkbox"/> Travel and Tourism |
| <input type="checkbox"/> Shipping | <input type="checkbox"/> Transport & Car Hire |
| <input type="checkbox"/> Insurance | <input type="checkbox"/> Airline-Airport Handling |

The **BORNEO** Company (Thailand) Limited

1041 Silom Road • Bangkok • Thailand

With the compliments

of

THE THAI DANU BANK LIMITED



QUALITY PAINTS

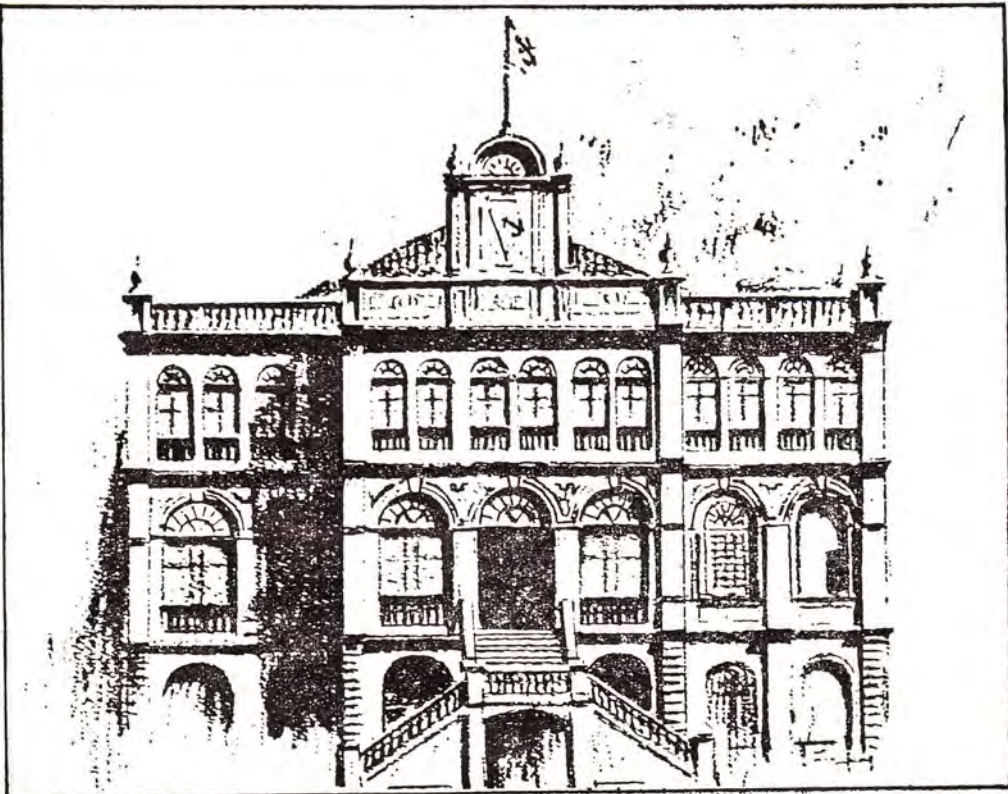
ICI (Thailand) Limited

Pakkred PO Box No 1

Amphur Pakkred Nonthaburi

SHIPPING · TRADE · INDUSTRY
PLANTATIONS · WAREHOUSING · INSURANCE

EAC



THE EAST ASIATIC COMPANY LIMITED
THAILAND

COLOURS

give spice to life

Add to that

QUALITY

and one gets

JOTUN PAINTS

**JOTUN THAILAND LIMITED
MANUFACTURERS OF QUALITY
PAINTS FROM NORWAY**

HEAD OFFICE :
448, Suriwongse Road
Bangkok. Tel 36170

FACTORY :
Samrong,
Smutprakarn.
Tel. 931404

THE THAI MILITARY BANK, LTD.

A Bank of Quality and Reliability

96 Mansion 2, Rajdamnern Avenue, Bangkok,

Tel: 22-3131

Sukum Navapan, President

**A Bank of Proven Quality
marked by outstanding security,
Growth, success and excellent service.**

**A truly Public Company
with over 5,000 shareholders.**



For supreme occasions *The Regent Room*

Travertine marble floors. Louis Quinze chairs. Exquisitely elegant chandeliers. Breathtaking mirrors. Noble crystal. Take all of these. Let the design flair of Baron Francois Duhau de Berenx combine them after the grand manner of the Palais Versailles and the Court of St. James, add the gastronomic virtuosity of Gerard Musset, and place them overlooking a torchlit courtyard terrace beside the River of Kings. The result is The Oriental's sumptuous new locale for select banquets and intimate receptions. For those most important of occasions when only superlative standards of fastidious perfection in surroundings and service can possibly be good enough. We bring you, with pride, The Regent Room.



THE ORIENTAL HOTEL

BY THE RIVER OF KINGS

Telephone: 39920-9

Regent Room capacity: to dine, up to 80 guests; for cocktails, up to 150 guests.

TRUNG THAI BANK



THROUGHOUT THAILAND
AND
WORLD-WIDE CORRESPONDENTS

HEAD OFFICE: 260 YAWARAJ ROAD, BANGKOK, THAILAND

TEL. 220131-140
220141-150
220151-160

2 economists, 4 lawyers, 13 engineers, 2 architects,
11 business administrators, 41 pharmacists,
3 doctors, 78 accountants and cashiers, 10 artists, 9 arts
graduates, 1 vet, 1 agronomist, 65 trained marketing men,
486 salesmen of proven ability, 646 back-up staff
from print buyers to projectionists, 127 hard worked
stock-clerks, 1 psychologist and an ex-swiss banker.

1 company **DIETHELM & CO., LTD.** **BANGKOK**

A broadly based marketing and distributing
company with a multitude of specialised
skills—offering a total marketing service in Thailand
to manufacturing companies internationally.

Ask us something.

We have 1500 capable people, 12000 sq. metres
of warehousing, 94 trucks and the best informed
and widest reaching distribution system in the country.
Maybe we can help you.

DIETHELM & CO., LTD.

280 New Road, Bangkok, Cables: DIETHELMCO

Consumer goods. Shipping. Travel. Engineering.
Manufacturing. Industrial Suppliers. Pharmaceuticals.
Photographics. Provisions. Advertising.
Marketing Research.

Head Office: Zurich. Branches
in 20 countries around the world.



ร้านสุกักร้า พิจิตรภัณฑ์ เอ็มไอเคอร์มงคล

การตกแต่ง ต่อเติม ที่เฮ้อ่า

เมื่อมีครัวห้อยเข้ามาในบ้าน เราจะพบอะไร บ้านที่ตกแต่งไว้อย่างสวยงามตามแบบฉบับของผู้มีรสนิยมสูง หรือห้องที่มึนโง่ไร้แสงสี ไปรคอย่าลืมว่าบ้านมีส่วนสะท้อนให้เห็นถึงอุปนิสัยและรสนิยมของท่าน บ้านที่น่าอยู่น่าอาศัยคือบ้านที่ตกแต่งด้วยพรมไทป์ ท่านจะเลือกแบบหรือสีใดก็ได้ทั้งสิ้น

เชิญแวะชมที่ห้องโชว์ถนนเพลินจิต แล้วท่านจะตระหนักดีว่าทำไมบ้านจึงโอ้อ่ากระการทาสีได้ เมื่อใช้พรมไทป์ นอกจากนั้นพรมไทป์ยังดูแลรักษาง่ายด้วยการทำความสะอาดอย่างทั่วถึงเพียงปีละครั้ง โดยช่างผู้เชี่ยวชาญของบริษัท พรมไทย กลิ่นนี้ จำกัด ซึ่งขณะนี้ได้เปิดบริการแล้วในอัตราตารางฟุตละ 3 บาทเท่านั้น ท่านก็จะวางใจได้ในความงามและทนทานไปจนตลอดชีวิต



บุคคลชั้นนำ นิยมใช้แต่ ไทป์

บริษัท อุตสาหกรรมพรมไทย จำกัด 544/9-10 ถนนเพลินจิต พระนคร โทร. 511852, 55078, 55529

WITH THE
COMPLIMENTS
OF
THE HONGKONG AND SHANGHAI BANKING
CORPORATION

THE FIRST BANK TO BE ESTABLISHED
IN THAILAND
ALL BANKING BUSINESS TRANSACTED

2 Hongkong Bank Lane, Siphya Road
Tel. 31321-31325

โคคา-โคลา

เครื่องดื่มยอดนิยมอันดับ 1 ในโลก

ถูกใจจริง ๆ



ผู้บรรจุนครบถ้วนตามมาตรฐาน บริษัท ไทยน้ำทิพย์ จำกัด โทร. 776451-6

Put your Company name here



When you need that extra bus why go to the expense of buying one when you can have one of ours. We'll put your company name on the bus FREE! So that it will look like yours. We operate the largest Air-Conditioned Fleet in the country. Those who already have include, KLM, Thai International, Thai Bridgestone, Foremost, Tommie's Tours to name a few. So when it's an extra bus you need just,

dial-a-DIAMOND

917022 or 917223

DIAMOND COACH COMPANY LIMITED
98 SOI ARI, SUKUMVIT 26, BANGKOK.



Contributions

Contributions to the *Journal* should be sent by registered mail to the Honorary Editor on single sides of quarto paper, typed and with double spacing. Footnotes should appear at the end. All contributions must be accompanied by a short biographical note about the author. The deadline for the January issue is 1 August and for the July issue is 1 February.

EDITORIAL AND PUBLICATIONS COMMITTEE

Chairman : Dr. Tej Bunnag, Honorary Editor,
Journal of the Siam Society

Editorial
Assistant : Sarah W. Trench
Advertising Manager : Mr. Euayporn Kerdchouay

ADVERTISING RATES

Full page : 1,000 baht per issue

Half page : 600 baht per issue

Quarter page : 400 baht per issue

Page size : $9\frac{1}{2}'' \times 7''$

Text to be submitted by 1st October for January issue, 1st April for July issue

PUBLICATIONS OF THE SIAM SOCIETY

	Price (Baht)
<i>The Journal (JSS)</i> —per number	40
<i>The Journal (JSS)</i> —back numbers before 1946 (Vols. 1-33 and 38-45 sold out) ...	60
Index to the Journal (JSS), Volumes 1 to 50	15
The commemorative reprint volumes published on the occasion of the Society's 50th Anniversary	
Vols. I & II (1954) Selected reprints from JSS pp. 290 & pp. 300 paper	100
... .. bound	120
Vol. III (1959) Early History and Ayudhya	Sold out
Vol. IV (1959) Lopburi, Bangkok, Bhuket pp. 304... ..	50
Vol. V & VI (1959) Relations with Burma pp. 207 & pp. 228 each	50
Vol. VII (1959) Relations with Portugal, Holland and the Vatican pp. 276	50
Vol. VIII (1959) Relations with France, England and Denmark pp. 258	50
Vol. IX (1961) Dr. R.S. le May: <i>The Coinage of Siam</i>	Sold out
Vol. X (1961) Studies of old Siamese Coins pp. 148	50
<i>The Kamthieng House</i> , An Introduction, ill., 1966 pp. 51 ill paper	50
... .. bound	70
พุทธศาสนากับสังคมไทยปัจจุบัน (Proceedings of a seminar on Buddhism in Modern Thai Society), 1970 pp. 337	
... ..	20
Jacqueline Butler: <i>Yao Design</i> , pp. 35 ill., 1970	80
Richard Davis: <i>A Northern Thai Reader</i> pp. 91, 1970	40
Prince Dhani Nivat: <i>Articles reprinted from the Journal of the Siam Society</i> , ill., pp. 194, 1969 paper	100
... .. bound	120
<i>Felicitations Volumes of Southeast-Asian Studies</i>	
offered to Prince Dhani Nivat, 1965. Volumes 1 & 2 pp. 349 ill. set	160
Pimsai Amranand: <i>Gardening in Bangkok</i> pp. 165 ill., 1970	100
Erik Seidenfaden: <i>The Thai Peoples</i> 2nd ed., 1967	50
Charles Nelson Spinks: <i>The Ceramic Wares of Siam</i> pp. 196 ill. second edition, 1971	100
ed. Tej Bunnag and Michael Smithies: <i>In Memoriam Phya Anuman Rajadon</i> pp. 397 ill., 1970 paper	120
... .. bound	150
Gordon Young: <i>The Hill Tribes of Northern Thailand</i> ill. 5th edition, reprinting	

Natural History

The Natural History Bulletin (NHB)—per number (Vol. 1 sold out) Vol. 2 +	30
Florae Siamensis Enumeratio—per number (Vol. 1 & Vol. 2 pts. 1-2 sold out) Vol. 3	30
Albert H. Banner and Dora M. Banner:	
<i>The Alpheid Shrimp of Thailand</i> pp. 169 ill., 1966	80
Gunnar Seidenfaden and Tem Smitinand:	
<i>The Orchids of Thailand</i> A Preliminary List, Parts I-IV Complete in one volume 1959-65, pp. 870 ill. bound	450

THE SIAM SOCIETY

Under Royal Patronage

Address : 131 Soi Asoke (Soi 21) Sukhumwit Bangkok

Telephone : 914401

G.P.O. Box 65, Bangkok

OBJECTS

"The objects of the Society shall be the investigation and encouragement of the Arts and Sciences in relation to Thailand and neighbouring countries." (From the Rules of the Siam Society, Article 2)

SUBSCRIPTION

The annual subscription for Ordinary Members is Baht 200 which is payable in advance. There is also an entrance fee of Baht 150.

Life membership fee is Baht 3,000. Student members pay no entrance fee and their annual subscription is Baht 50.

Applications for membership should be addressed to the Administrative Secretary, G.P.O. Box 65, Bangkok. Application forms are also obtainable at the Society's home.

APPLICATIONS FOR COPIES OF THE JOURNAL

Applications for copies of the *Journal* should be made to the Administrative Secretary. Purchases may be made at the Society's home.

APPLICATIONS FOR COPIES OF THE NATURAL HISTORY BULLETIN

Copies of the Natural History Bulletin (NHB) are issued free to members on request only, one copy per member. Additional copies may be bought. Members wishing to receive NHB regularly should write to the Administrative Secretary.

LIBRARY

The library of the Society is open Tuesday to Saturday at the following hours :

Morning : 9.00-12.00

Afternoon : 13.00-19.00

The library and office are closed on Sundays and Mondays.

Books may be consulted and borrowed during library hours only.

Books borrowed from the library must be returned within one month.

KAMTHIENG HOUSE

The Kamthieng House opens Tuesdays, Fridays and Saturdays
from 9.00 a.m. to 12.00 noon.

Printed at Prachandra Printing Press, Maharaja Road, Bangkok, Thailand Tel. 221555
Mrs. Sanitwan Bunyasiribhandhu, Proprietor, Printer and Publisher 1972.

THE SIAM SOCIETY

Reprinted

March 1971

Charles Nelson Spinks — *The Ceramic Wares of Siam*
profusely illustrated with more than
50 pages of plates

the text of this second edition has been
revised in light of recent research

192 pages

full colour cover

100 baht