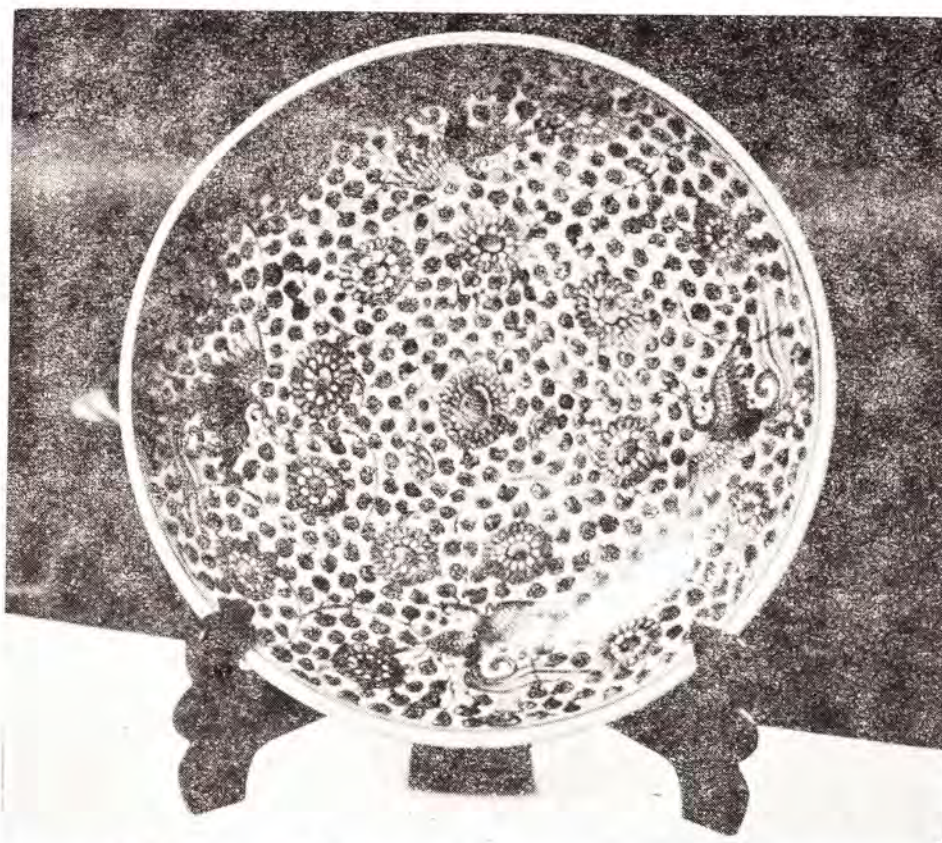


**With the compliments**

**of**

**THE THAI DANU BANK LIMITED**



# The value of an antique is measured by it's age~you could say the same about a bank.

A knowledge of business and finance isn't acquired overnight. It takes many years of experience. That's why we at the Hongkong Bank feel that we know all the answers.

We've been in Thailand since 1888.

The first — and still the best. And our expert knowledge is yours. If you want to send money abroad, or receive finance from overseas, we can arrange it with a minimum of fuss. And the same goes for any other banking problem you may have. Call in and see us. Any one of our expert Thai and British staff will be delighted to help you.



## THE HONGKONG AND SHANGHAI BANKING CORPORATION

Bush Lane, Siphya Road and 304 Suapah Road and Mercantile Bank Ltd.  
at 64 Silom Road and 42 Soi Asoke (Soi 21), Bangkok.





## **"BAYER-HOUSE"**

130/1 NORTH SATHORN ROAD, BANGKOK

TEL. 34843, 30249, 34070, 32185, 38203, 39246-49

## **BAYER THAI CO., LTD.**

SUPPLIERS OF A UNIQUE AND MOST ADVANCED RANGE  
OF INDUSTRIAL CHEMICALS, AGROCHEMICALS,  
DYESTUFFS, MAN-MADE FIBRES, AND PHARMACEUTICALS



Air Freight

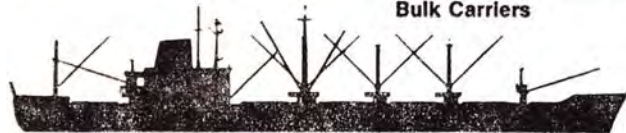
Oil Tankers



Bulk Carriers



Supply ships for  
oil drillings



General Cargo Ships



Reefer Vessels



**MAERSK LINE**

BANGKOK BRANCH



**Organising a Gala Function  
Planning a Wedding  
Holding a Reception  
Supervising a Seminar**



**Consider the  
Emerald Ballroom,  
the most luxurious in  
all of South East Asia.  
Opening December 1st.**



**INDRA REGENT BANGKOK**

Rajaprarob Road, Bangkok, Thailand. Tel. 511111

# JOURNAL OF ORIENTAL STUDIES

ESTABLISHED 1954

東方文化

HONG KONG UNIVERSITY PRESS



## Vol. XI No. 1 January 1973

### Articles in English

- |  |  |
|--|--|
| Philip N. Jenner and<br>Saveros Lewitz | "Some Chinese loanwords in Khmer"  |
| Richard Stremski                       | "Britain and warlordism: relations with Fung<br>Yu-Hsiang, 1921-1928"        |
| Graham E. Johnson                      | "In-migration and community expansion in<br>Hong Kong—the case of Tsuen Wan" |

### Articles in Chinese

- |                 |   |
|-----------------|---|
| Liu Tsun-yan    | "A biography of T'ao Chung-wen: a Taoist-<br>minister at the Ming court"  |
| Chiu Ling-yeong | "The historical writings of Li Chih"  |
| Wong Kai-che    | "The influence of the T'ai-chou School of Neo-<br>confucianism on literary thought of the late<br>Ming dynasty" |

## Vol. XI No. 2 July 1973

### Articles in English

- |                 |  |
|-----------------|--|
| S.F. Fung       | "The <i>Kung-Chin-Lui</i> : a late Ch'ing revolutionary<br>society"      |
| Vivian Ling Hsu | "The element of tone in the prosody of T'ang<br>poetry"                  |
| Peter Hodge     | "Social policy : a historical perspective as seen<br>in colonial policy" |

### Articles in Chinese

- |             |  |
|-------------|--|
| Chuang S.C. | "Nineteenth century Cantonese art collections<br>and their paintings by Cantonese artists"                                     |
| Wong L.P.   | "Some further notes on Lu wen-Ch'ao's <i>Chuang-<br/>tzu Yin-i Kao-cheng</i> "   |
| Lo H.L.     | "Chen Hsian-chang, a Cantonese philosopher<br>of the Ming period, with special reference to<br>his reference on Wang Shou-yen" |

An annual subscription costs HK \$60 (US \$12, UK £4.50) and the price of single issues is HK \$30 (approximately US \$6 at current rates of exchange). As a special offer while stocks last, complete sets of the Journal Vols I-X inclusive are being offered to libraries and to individuals for HK \$300 (US \$60, UK £22.50) subject to taking an advance subscription. A recent sample copy is available on request.

1. 1. 1.

1. 1. 1.

1. 1. 1.



## **Contributions**

Contributions to the *Journal* should be sent by registered mail to the Honorary Editor on single sides of quarto paper, typed and with double spacing. Footnotes should appear at the end. All contributions must be accompanied by a short biographical note about the author. The deadline for the January issue is 1 August and for the July issue is 1 February.

### **EDITORIAL AND PUBLICATIONS COMMITTEE**

Chairman : Dr. Tej Bunnag, Honorary Editor,  
*Journal of the Siam Society*

Honorary Editorial  
Assistants : Sunai Bunyasiribhandhu  
Sarah W. Trench

Advertising Manager : Mr. Euayporn Kerdchouay

### **ADVERTISING RATES**

Full page : 1,000 baht per issue

Half page : 600 baht per issue

Quarter page : 400 baht per issue

Page size :  $9\frac{1}{2}'' \times 7''$

Text to be submitted by 1st October for January issue, 1st April for July issue.

## PUBLICATIONS OF THE SIAM SOCIETY

	Price (Baht)
<i>The Journal (JSS)</i> —per number ... ..	50
<i>The Journal (JSS)</i> —back numbers before 1946 (Vols. 1-33 and 38-45 sold out) ...	60
Index to the Journal (JSS), Volumes 1 to 50 ... ..	15
The commemorative reprint volumes published on the occasion of the Society's 50th Anniversary	
Vols. I & II (1954) Selected reprints from JSS pp. 290 & pp. 300 ... .. paper	100
bound	120
Vol. III (1959) Early History and Ayudhya ... ..	Sold out
Vol. IV (1959) Lopburi, Bangkok, Bhuket pp. 304... ..	50
Vol. V & VI (1959) Relations with Burma pp. 207 & pp. 228 ... .. each	50
Vol. VII (1959) Relations with Portugal, Holland and the Vatican pp. 276 ... ..	50
Vol. VIII (1959) Relations with France, England and Denmark pp. 258 ... ..	50
Vol. IX (1961) Dr. R.S. le May: <i>The Coinage of Siam</i> ... ..	Sold out
Vol. X (1961) Studies of Old Siamese Coins pp. 148 ... ..	Sold out
<i>The Kamthieng House</i> , An Introduction, ill., 1966 pp. 51 ... .. paper	50
bound	70
พุทธศาสนากับสังคมไทยปัจจุบัน (Proceedings of a seminar on Buddhism in Modern Thai Society), 1970 pp. 337 ... ..	
	20
Jacqueline Butler: <i>Yao Design</i> , pp. 35 ill., 1970 ... ..	80
Richard Davis: <i>A Northern Thai Reader</i> pp. 91, 1970 ... ..	40
Prince Dhani Nivat: <i>Articles reprinted from the Journal of the Siam Society</i> , ill., pp. 194, 1969 ... .. paper	100
bound	120
<i>Felicitatation Volumes of Southeast-Asian Studies</i>	
offered to Prince Dhani Nivat, 1965. Volumes 1 & 2 pp. 349 ill. ... .. set	160
Pimsai Amranand: <i>Gardening in Bangkok</i> pp. 165 ill., 1970 ... ..	100
Erik Seidenfaden: <i>The Thai Peoples</i> 2nd ed., 1967 ... ..	50
Charles Nelson Spinks: <i>The Ceramic Wares of Siam</i> pp. 196 ill. second edition, 1971 ... ..	100
ed. Tej Bunnag and Michael Smithies: <i>In Memoriam Phya Anuman Rajadhon</i> pp. 397 ill., 1970 ... .. paper	120
bound	150
Vichin Panupong: <i>Inter-sentence relations in modern conversational Thai</i> , 1970 ... ..	100
Gordon Young: <i>The Hill Tribes of Northern Thailand</i> ill. 5th edition, ... .. reprinting	

### Natural History

The Natural History Bulletin (NHB)—per number (Vol. 1 sold out) Vol. 2 + ... ..	30
Florae Siamensis Enumeratio—per number (Vol. 1 & Vol. 2 pts. 1-2 sold out Vol. 3	30
Albert H. Banner and Dora M. Banner: <i>The Alpheid Shrimp of Thailand</i> pp. 169 ill., 1966 ... ..	80
Gunnar Seidenfaden and Tem Smitinand: <i>The Orchids of Thailand</i> A Preliminary List, Parts I-IV Complete in one volume 1959-65, pp. 870 ill. ... ..	450



## THE SIAM SOCIETY

Under Royal Patronage

---

Address : 131 Soi Asoke (Soi 21) Sukhumwit Bangkok

Telephone : 914401

G.P.O. Box 65, Bangkok

---

### OBJECTS

"The objects of the Society shall be the investigation and encouragement of the Arts and Sciences in relation to Thailand and neighbouring countries." (From the Rules of the Siam Society, Article 2)

### SUBSCRIPTION

The annual subscription for Ordinary Members is Baht 200 which is payable in advance. There is also an entrance fee of Baht 150.

Life membership fee is Baht 3,000. Student members pay no entrance fee and their annual subscription is Baht 50.

Applications for membership should be addressed to the Administrative Secretary, G.P.O. Box 65, Bangkok. Application forms are also obtainable at the Society's home.

### APPLICATIONS FOR COPIES OF THE JOURNAL

Applications for copies of the *Journal* should be made to the Administrative Secretary. Purchases may be made at the Society's home.

### APPLICATIONS FOR COPIES OF THE NATURAL HISTORY BULLETIN

Copies of the Natural History Bulletin (NHB) are issued free to members on request only, one copy per member. Additional copies may be bought. Members wishing to receive NHB regularly should write to the Administrative Secretary.

### LIBRARY

The library of the Society is open Tuesday to Saturday at the following hours :

Morning : 9.00-12.00

Afternoon : 13.00-19.00

The library and office are closed on Sundays and Mondays.

Books may be consulted and borrowed during library hours only.

Books borrowed from the library must be returned within one month.

### KAMTHIENG HOUSE

The Kamthieng House opens Tuesdays, Fridays and Saturdays  
from 9.00 a.m. to 12.00 noon.

---

Printed at Prachandra Printing Press, Maharaja Road, Bangkok, Thailand. Tel. 221555  
Mrs. Sanitwan Bunyasiribhandhu, Proprietor, Printer and Publisher 1973.



**MONUMENTS OF THE BUDDHA  
IN SIAM**

**By Prince Damrong Rājānubhāb**  
Vice-Patron of the Siam Society (1904-1943)

**Translated by Sulak Sivaraksa and A.B. Griswold**  
**with footnotes by Prince Subhadradis Diskul**  
**and A.B. Griswold**

First Edition, published 1962  
under the title  
*A History of Buddhist Monuments in Siam*



**Monograph No. II (revised)**

**The Siam Society**  
**Under Royal Patronage**  
Bangkok  
August, 1973  
40 baht