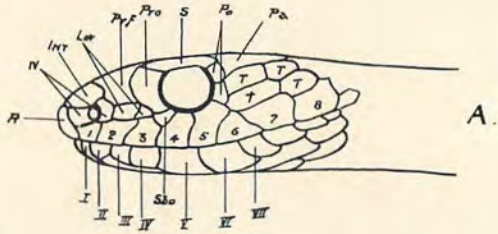
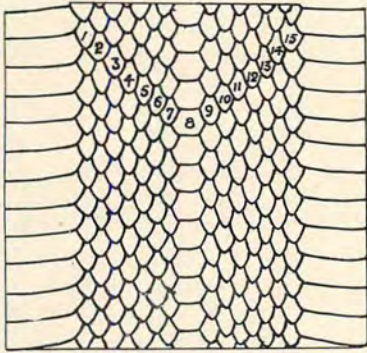
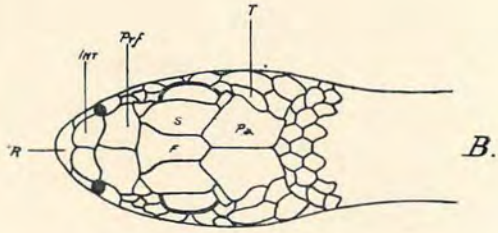


D.

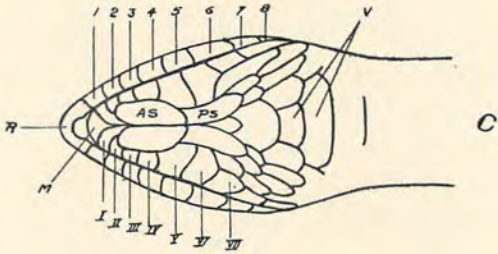
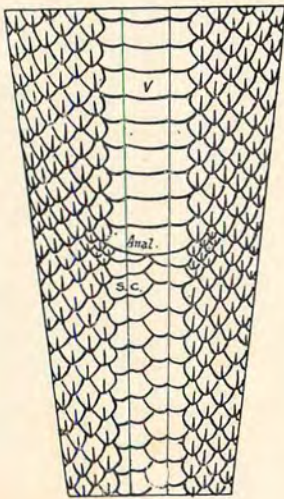


A.



B.

E.



C.



EXPLANATION OF PLATE.



Head of *Zamenis mucosus*.

A. Side view.	B. Upper surface.	C. Under surface.
R. Rostral.	N. Nasal.	Int. Internasal.
Lor. Loreal.	Prf. Præfrontal.	Pro. Praeocular.
S. Supraocular.	Po. Postocular.	Pa. Parietal.
Sbo. Subocular.	T. Temporal.	F. Frontal.
A. S. Anterior sublinguals.	P. S. Posterior sublinguals.	
Arabic numerals—Supralabials.	Roman numerals—Infralabials.	

D. Body of *Bungarus fasciatus* (Banded Krait) showing enlarged vertebral scales, and method of counting the costal scales. Ventral shields shown on either side.

E. Under surface of *Chrysopelea ornata* showing Ventral (V) and Subcaudal (S. C.) shields with the lateral keel and a notch on each side corresponding to the keel. Costal scales shown on either side.

EXPLANATION OF PLATE