

THE
JOURNAL
OF THE
SIAM SOCIETY

VOLUME XIX

(PART 2)

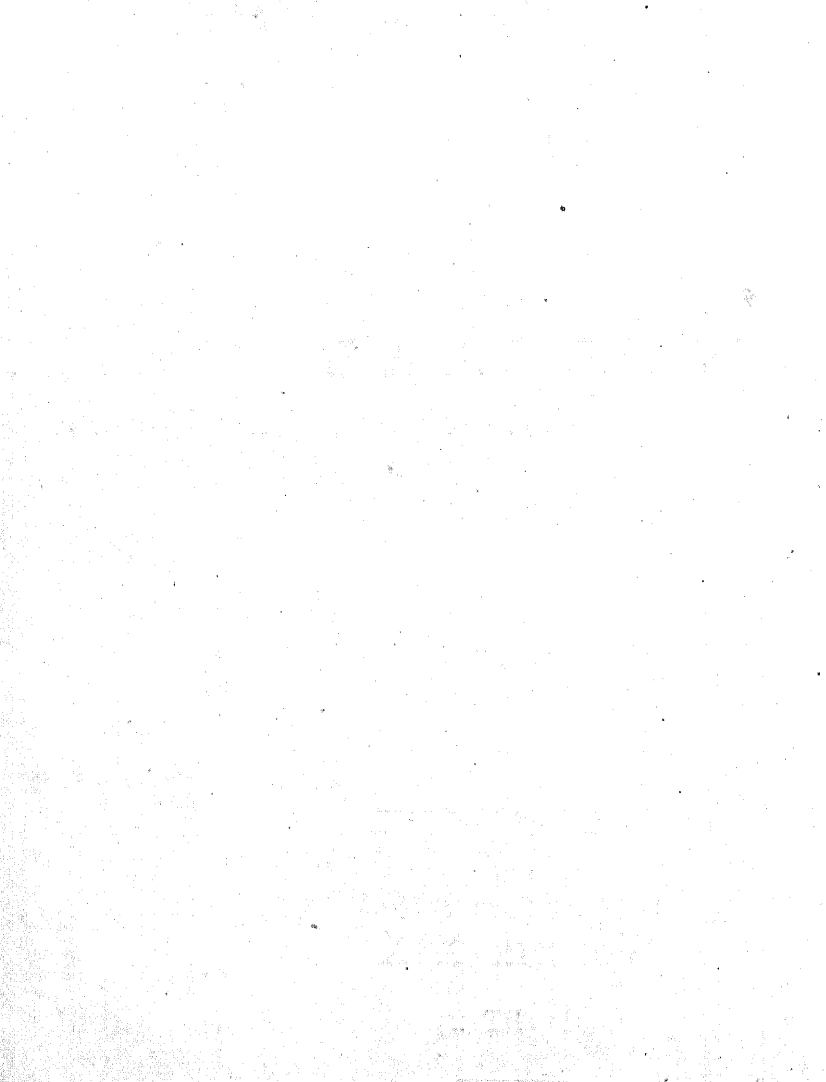
BANGKOK

1925.

Issued to Members of the Society

September 1925.

Price to Non-Members Tes. 7.00



THE SIAM SOCIETY

(FOUNDED 1904)

For the Investigation and Encouragement of Arts, Science
and Literature in relation to Siam, and neighbouring
Countries.

PATRON:

HIS MAJESTY THE KING.

VICE-PATRON:

HIS ROYAL HIGHNESS PRINCE DAMRONG RAJANUBHAB.

HONORARY PRESIDENT:

HIS ROYAL HIGHNESS THE PRINCE OF NAGARA SVARGA.

HONORARY VICE-PRESIDENT:

HIS ROYAL HIGHNESS THE PRINCE OF KAMBAENG BEJRA

COUNCIL FOR 1925.

PRESIDENT:

W. A. GRAHAM, M.R.A.S., F.R.G.S.

VICE-PRESIDENTS:

PHYA INDRA MONTRI.

PROF. G. CÆDÈS, M.R.A.S.

MAJOR E. SEIDENFADEN, M.R.A.S.

HON. SECRETARY:

R. S. LE MAY, M.R.A.S.

HON. TREASURER:

L. BISGAARD.

HON. LIBRARIAN AND EDITOR:

E. G. SEBASTIAN.

MEMBERS OF COUNCIL:

DR. A. F. G. KERR.

W. H. MUNDIE, M.A.

J. G. RAGGI.

PROF. BRÉAL.

DR. HUGH M. SMITH.

P. R. KEMP, F.R.G.S.

HONORARY MEMBERS:

- H. R. H. THE PRINCE OF JAINAD,—*Bangkok*
H. H. PRINCE BIDYALANKARANA,—*Bangkok*
RIGHT REV. BISHOP R. M. J. PERROS,—*Bangkok*
W. J. ARCHER, C.M.G.,—*London*
J. CROSBY, C.I.E., O.B.E.,—*Batavia*.
PROFESSOR F. LORGEOU,—*Paris*
MONSIEUR A. PAVIE,—*Paris*
SIR ERNEST M. SATOW,—*London*
SIR J. GEORGE SCOTT,—*London*
J. HOMAN VAN DER HEIDE,—*Bemmel, Holland*
DR. C. B. BRADLEY,—*California*
RONALD W. GIBLIN,—*London*
A. J. IRWIN,—*Cheltenham*
DR. H. CAMPBELL HIGHET,—*Winchester*
DR. PAUL TUXEN,—*Copenhagen*
MISS E. S. COLE,—*St Joseph, Mo., U. S. A.*
PROFESSOR L. FINOT,—*Hanoi*
COUNT GYLDENSTOLPE,—*Stockholm*
C. BODEN KLOSS,—*Singapore*
H. C. ROBINSON,—*Kuala Lumpur*
J. C. MOULTON,—*Sarawak*
E. C. STUART BAKER,—*Norwood, London.*

CORRESPONDING MEMBERS:

- TAW SEIN KO,—*Mandalay*
H. WARINGTON SMYTH,—*The Transvaal*
PROFESSOR CONTE F. L. PULLE,—*Bologna*
PROFESSOR A. CABATON,—*Paris*
W. G. CRAIB,—*Aberdeen*
J. A. CABLE,—*London*
G. C. B. STIRLING,—*Jersey*
P. PETITHUGUENIN,—*Peking*
B. O. CARTWRIGHT,—*Channel Islands*
W. NUNN,—*Newcastle-on-Tyne*
C. A. SEYMOUR SEWELL, M.A.; M.R.A.S.,—*London*
J. MICHELL, F.R.G.S.