

MISCELLANEOUS NOTES.

No. I. Remarks on *Bos sondaicus* (the Tsine or Banting)
and on *Bos sondaicus porteri*.

The upper photograph is that of a bull Tsine shot by Mr. A. A. Porter some nine years ago in the Me Wong district about eighty miles north-west of Paknampoh in Central Siam. This bull, undoubtedly aged, judging by the deep corrugations in the horns, differed from any previously recorded specimens, in that the black, or dark brown, skin of the whole body was spotted with white, each spot the size of a sixpence. The head and part of the skin were sent to the British Museum, and on this material Lydekker based his subspecies *Bos sondaicus porteri*.

In 1909, Mr. Elwes shot a similarly marked bull in the same area, and the head of this animal is shown on the right hand in the lower illustration. This also is an aged animal, the teeth worn flat and both horns blunted and corrugated.

Major Evans (Big Game Shooting in Burma) states that he has seen black bulls, and it seems to be a generally accepted fact that old bulls of this species are often gray and sometimes black (in the Javanese race usually black) although Rowland Ward (Records of Big Game, 1899), wrongly states that in the Burmese variety "old bulls retain the reddish tint of the cow throughout life".

Had Major Evans struck herds of black Tsine, he would undoubtedly have said so, but he evidently found these black bulls on the same ground and among herds of Tsine of the ordinary colour, viz., reddish-yellow or light chestnut, a colour rather lighter than that of the Siamese Barking Deer.

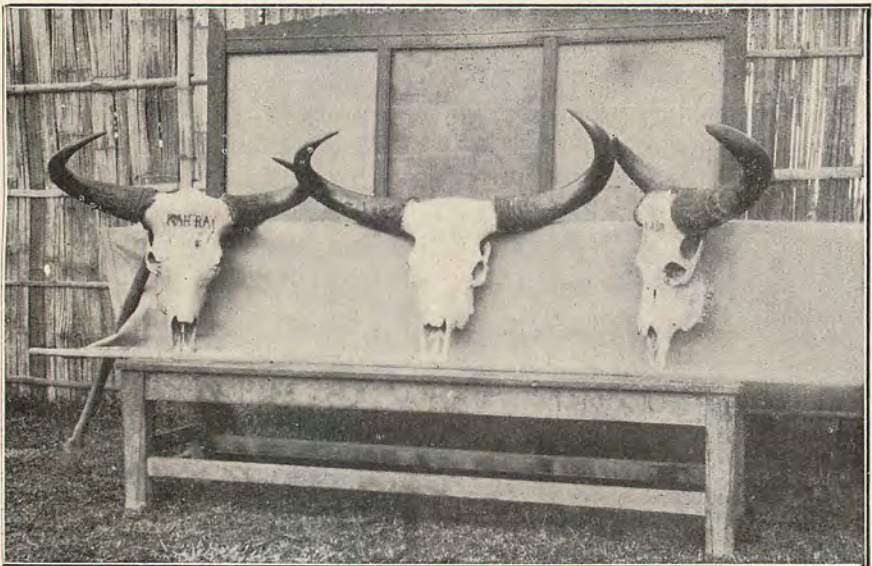
Messrs. Elwes and Porter obtained their spotted bulls on the same ground as where they shot numerous animals of the usual colour, and this year Mr. St. John Yates writes me that he has obtained a spotted bull from another herd in that district. I have not compared skulls of Me Wong animals with any from Burma, but can find no sensible difference in any cranial dimensions among the three heads shown in the photograph, and two of which were yellow bulls; nor do these differ in any way from the skull of a grey-faced hill-bull obtained by the writer in the Raheng district last year. The measurements accord with those given by Blanford of a male skull from Borneo.

Change of colour in the male, due to age, being recognized, and and there being no record of black or spotted cows, Lydekker's subspecies *B. s. porteri* appears to be unnecessary.

Major Evans has recorded the habits of this animal very fully as regards Burma, and I can bear out his statement that in the hills Tsine are easily stalked, having approached to within 10 yards



Bos sondaicus porteri. Lyd.



Heads of Tsine (*Bos sondaicus*).

and shot, at two p.m., a bull which had that morning been feeding with the herd among the pines, at an elevation of 2500 feet. From the appearance of the numerous paths running along the faces of the steep hillsides, that high elevation appeared to be a hot weather resort for the herd. In the Me Kloug they were as a rule found at a much lower elevation, in mixed and deciduous jungle, and in the Me Wang I understand they (and occasionally Gaur) are usually found in dry jungle subject to annual forest fires.

The lower photograph shows three good heads obtained by Mr. Elwes in the Me Wang district, the central head being the best so far recorded from Siam, and would stand a good third in Rowland Ward's list for the species, a good third, advisedly, as eight years elapsed before the writer's measurements were taken, and the bases have undoubtedly contracted considerably.

Cranial measurements of Siamese Tsine in inches.

	Left.	Centre.	Right. Spotted bull.	Raheng hill bull.
Greatest upper length including crest	20.7	20.5	20.0	20.8
Basal length	18.2	—	17.8	—
Zygomatic breadth	9.3	—	8.7	—
Greatest orbital breadth	9.2	9.7	9.1	9.1
Least do. do.	7.1	7.3	6.5	6.7
Length of upper tooth series	5.7	—	5.6	5.8

The record head, from Upper Burma, has a length of 33½ inches on the outside curve and circumference of 17 in. The measurements of the central head shown are 28.6 and 15.5 respectively, with a span of 34.7 ins., and tip to tip 27 ins.

K. G. GAIRDNER, C. M. Z. S.

March, 1917.

No. II. Note on the Bay Cat (*Felis temmincki*)

Supplementing the note by Mr. Kloss in Vol. II, p. 79 of this Journal, the following note on one of this species obtained in the rapids below Chiengmai (N. Siam) may be of interest. The specimen, a male, was found in the early morning crouching on a small rock at the base of an overhanging cliff, and could only have reached the rock by swimming some distance in deep water. The boatmen held the beast under water with boat-poles and drowned it, and I am uncertain of the colour of the eyes—the liquid green of the enlarged pupils occupying the whole eye. The measurements were:—length 26.4 inches; tail 15.3; height at shoulder 16; ear (from skull) 2.25. The skin and skull were sent to Mr. Boden Kloss who has sent the skull measurements as follows:—greatest length 126 mm; basal length 106; condylo-